

Chicago O'Hare International Airport
Mayor • Lori Lightfoot

Chicago Department of Aviation
Commissioner • Jamie Rhee

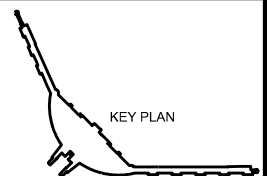
UNISON RETAIL MANAGEMENT

Terminal 5 Expansion West Concourse

Location #20A - Package #1

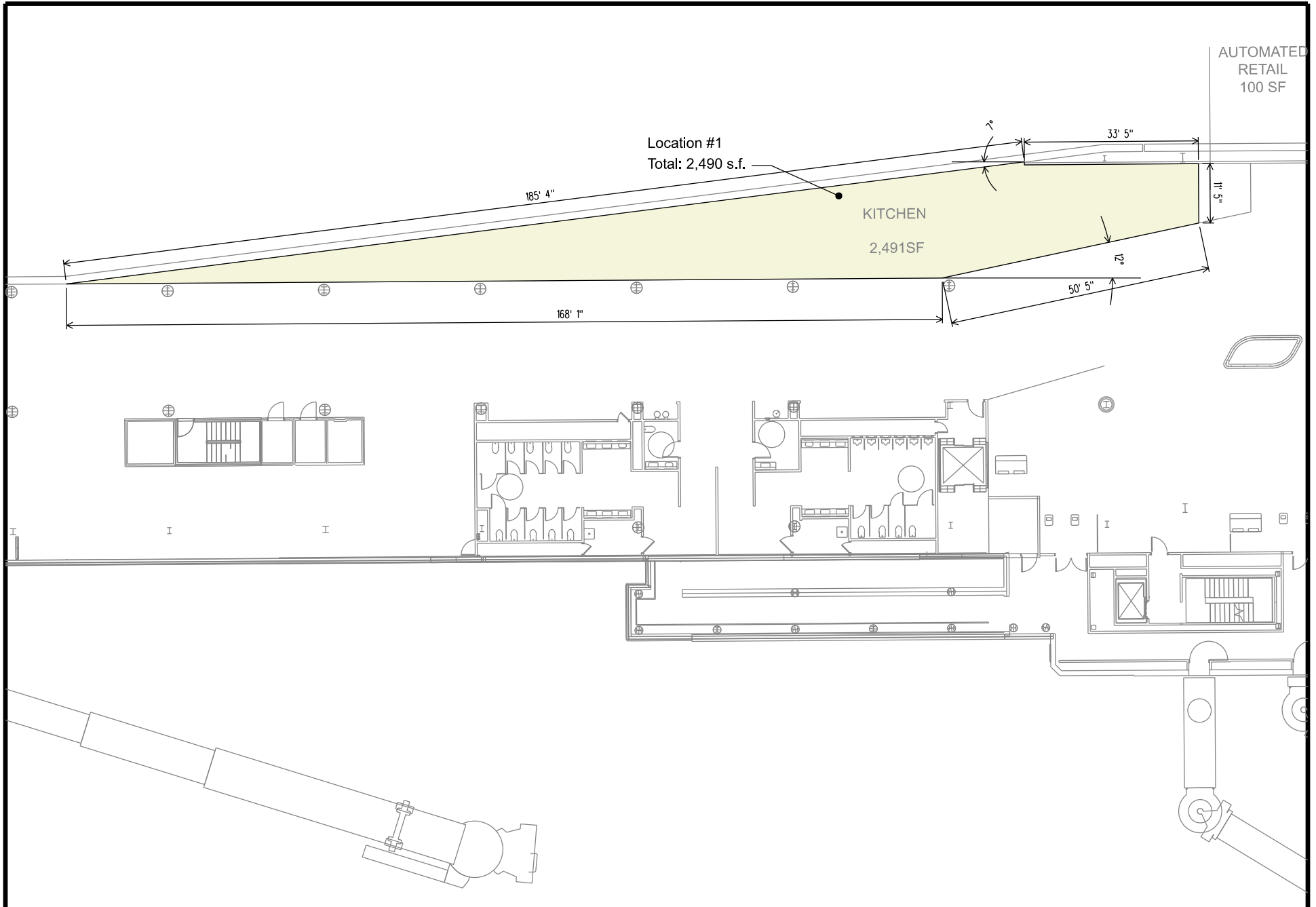
Location #20B - Package #6

Scale: 1/16" = 1'- 0"



Date: April, 2021

Created by CADD Services



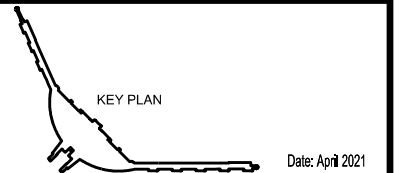
Chicago O'Hare International Airport
 Mayor • Lori Lightfoot

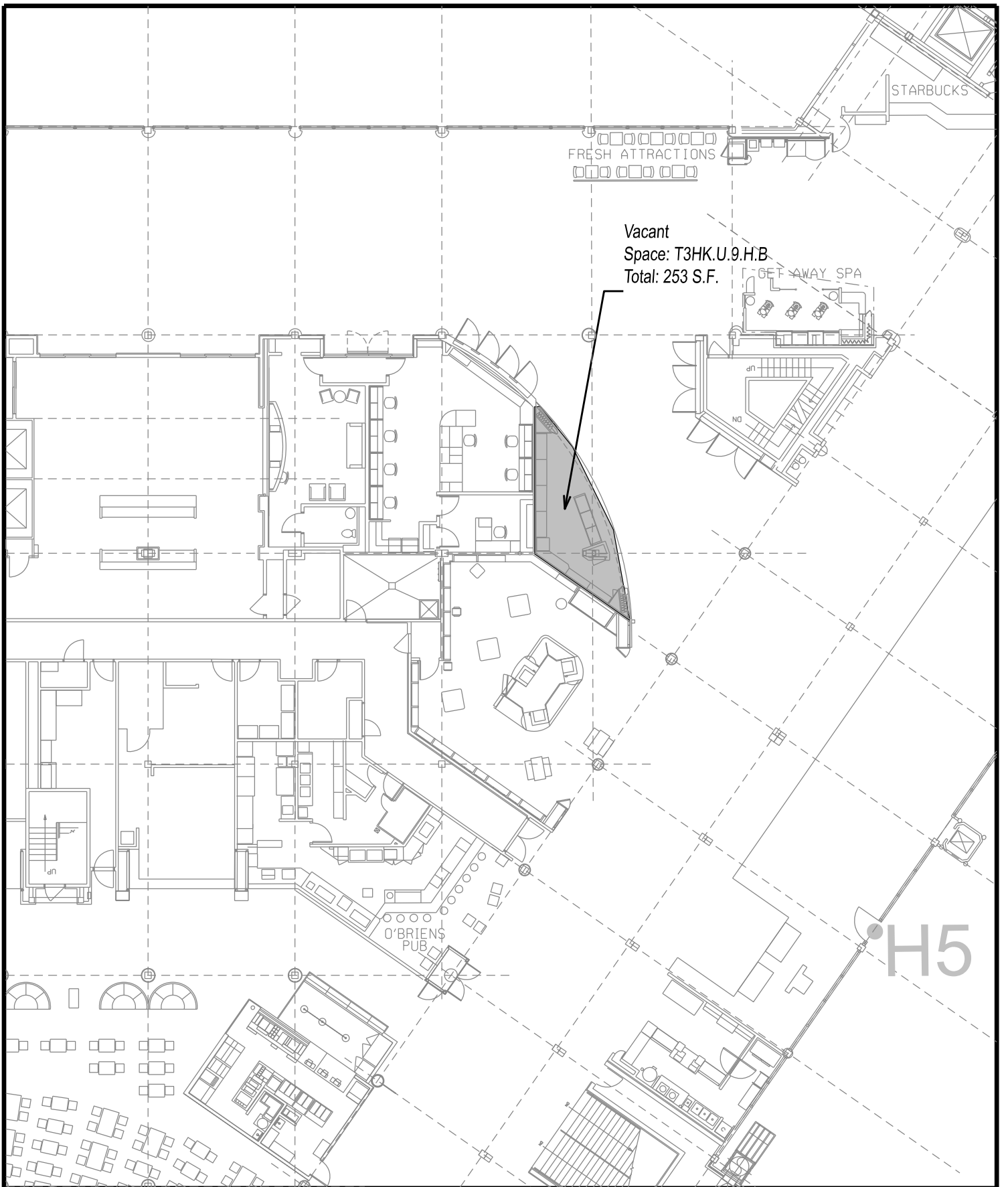
Chicago Department of Aviation
 Commissioner • Jamie Rhee

UNISON RETAIL MANAGEMENT

Terminal 5 Expansion East Concourse
 Concession Location #1 - Package #1

Scale: 1/16" = 1'-0"





Vacant
 Space: T3HK.U.9.H.B.
 Total: 253 S.F.

Chicago O'Hare International Airport
 Mayor • Lori Lightfoot

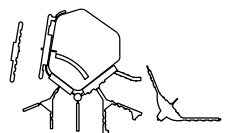
Chicago Department of Aviation
 Commissioner • Jamie Rhee

UNISON RETAIL MANAGEMENT

Terminal 3 / Concourse HK Upper Level

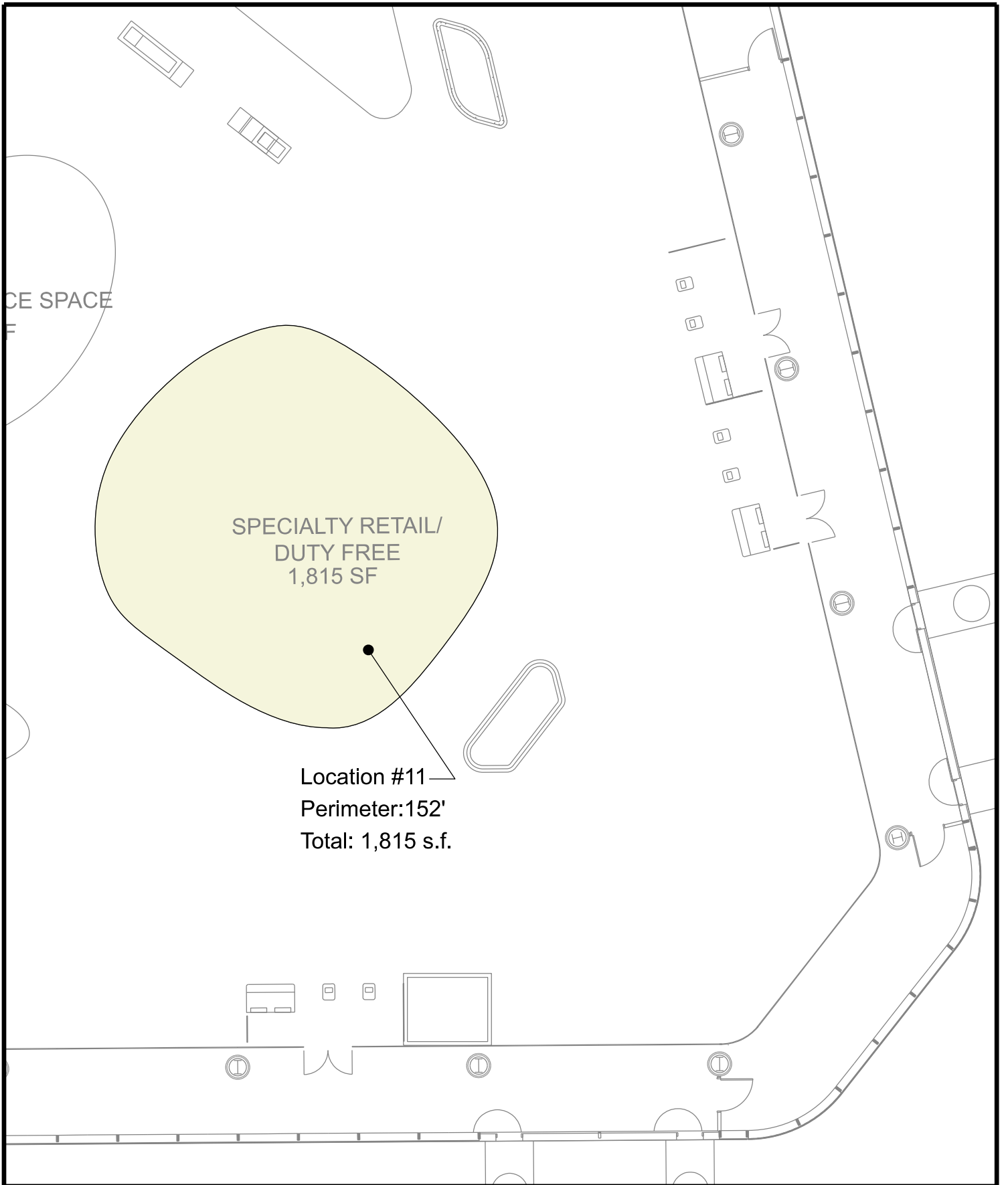
Vacant (T3HK.U.9H.B) - Package #2

Scale: 1"= 20'- 0"



KEY PLAN

Date: July , 2020



Chicago O'Hare International Airport
Mayor • Lori Lightfoot

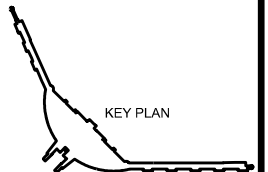
Chicago Department of Aviation
Commissioner • Jamie Rhee

UNISON RETAIL MANAGEMENT

Terminal 5 Expansion East Concourse

Location #11 - Package #2

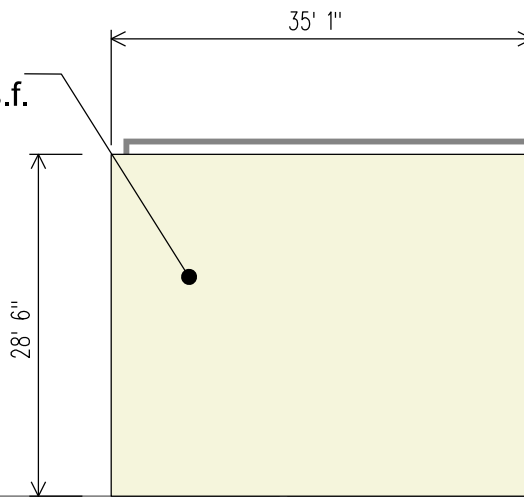
Scale: 1/16" = 1'-0"



Date: April, 2021

Created by CADD Services

Location #19
Total: 1,000 s.f.



Chicago O'Hare International Airport
Mayor • Lori Lightfoot

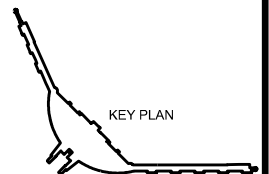
Chicago Department of Aviation
Commissioner • Jamie Rhee

UNISON RETAIL MANAGEMENT

Terminal 5 Expansion West Concourse

Location #19 - Package #3

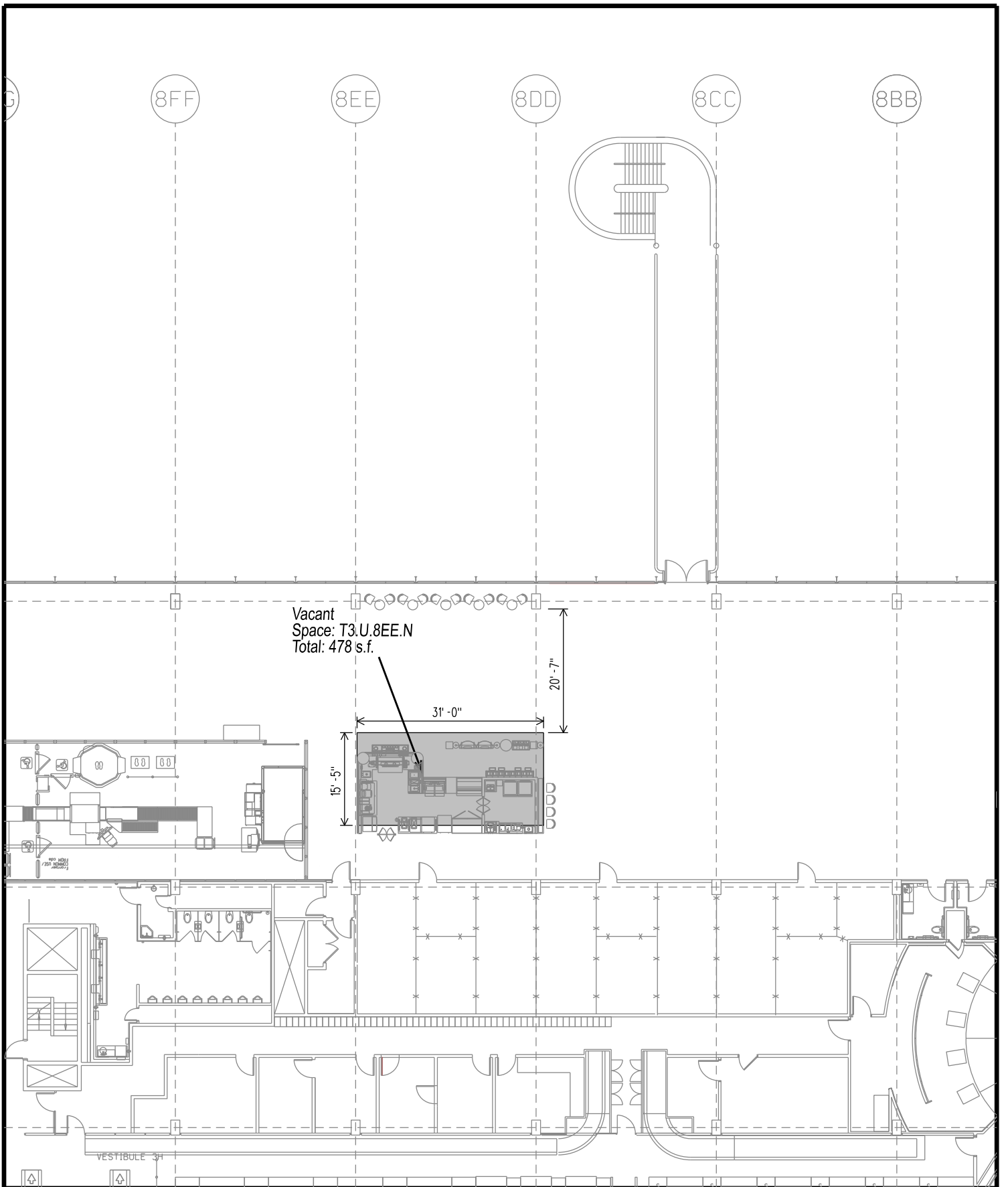
Scale: 1/16" = 1'-0"



KEY PLAN

Date: April, 2021

Created by CADD Services



Chicago O'Hare International Airport
Mayor • Lori Lightfoot

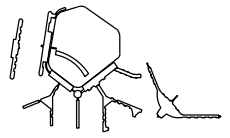
Chicago Department of Aviation
Commissioner • Jamie Rhee

UNISON RETAIL MANAGEMENT

Terminal 3 Upper Level

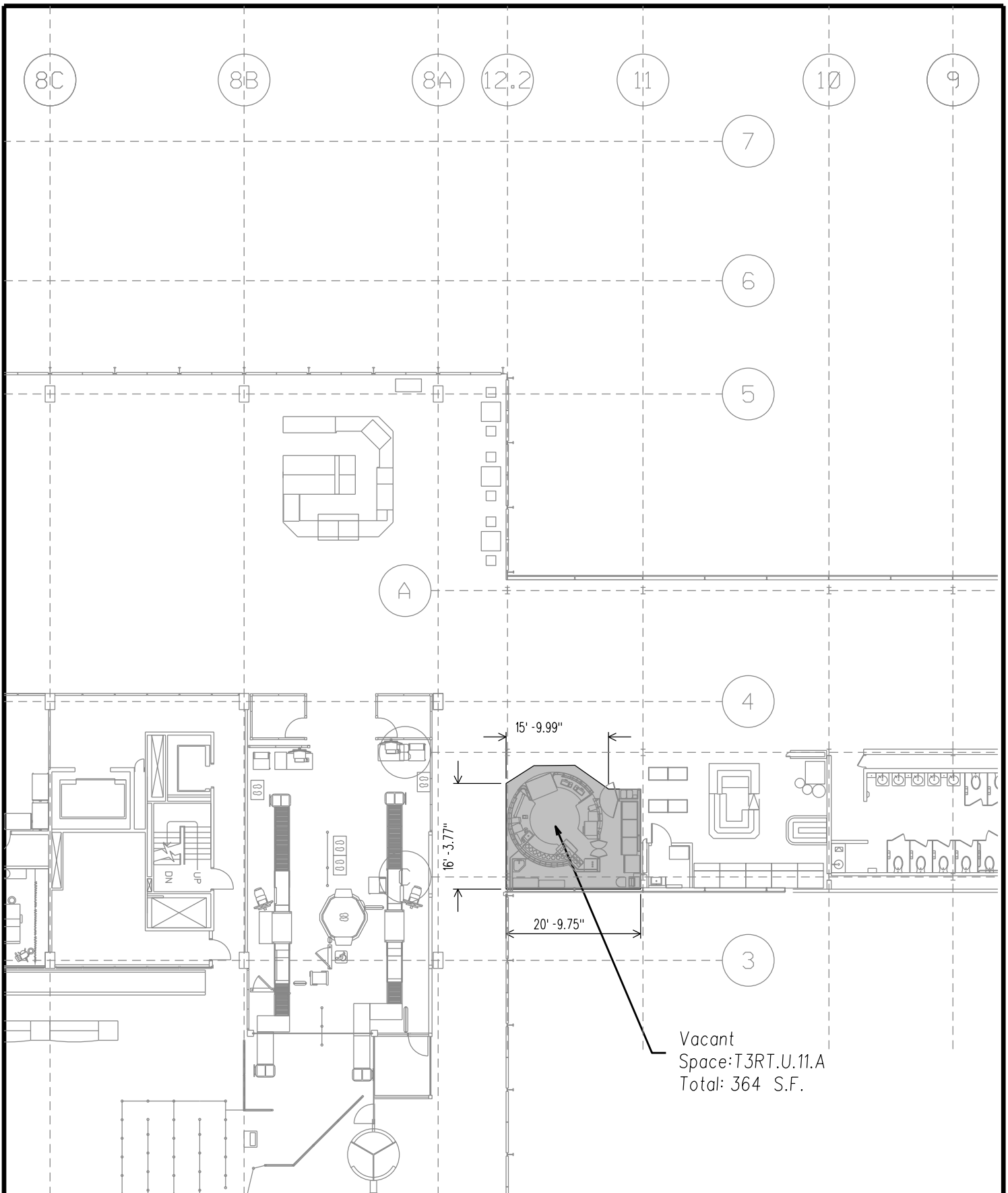
Vacant (T3.U.EE.N) - Package #4

Scale: 1" = 20'- 0"



KEY PLAN

Date: Date: April 02 2021



Chicago O'Hare International Airport
 Mayor • Lori Lightfoot

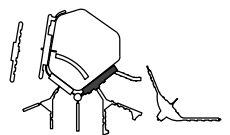
Chicago Department of Aviation
 Commissioner • Jamie Rhee

UNISON RETAIL MANAGEMENT

Terminal 3/ Rotunda Link Upper Level

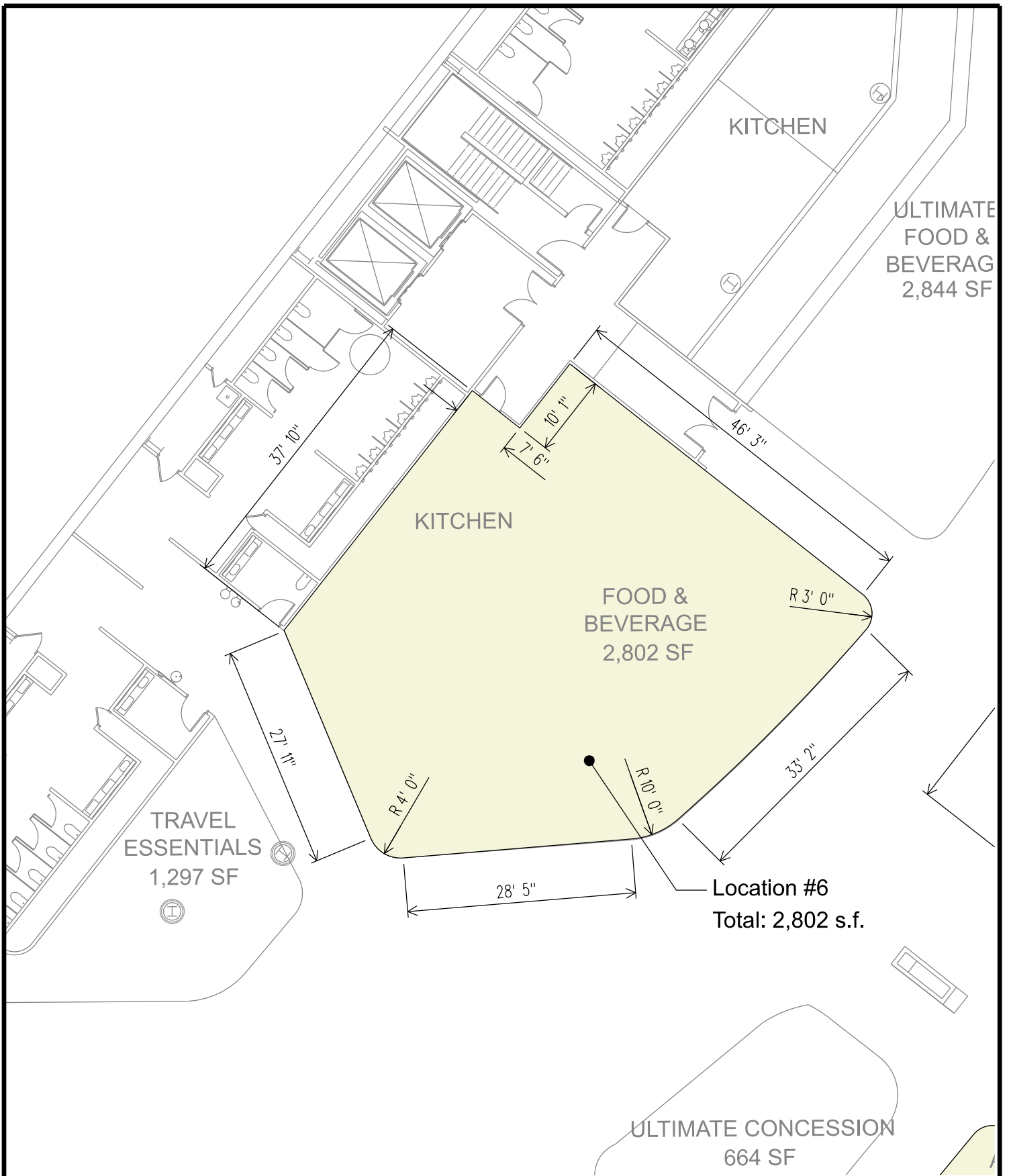
Vacant (T3RT.U.11.A) - Package #5
 364 s.f.

Scale: 1" = 20' - 0"



KEY PLAN

Date: April 10, 2021



Chicago O'Hare International Airport
 Mayor • Lori Lightfoot

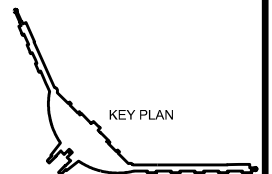
Terminal 5 Expansion East Concourse

Chicago Department of Aviation
 Commissioner • Jamie Rhee

Location #6 - Package #6

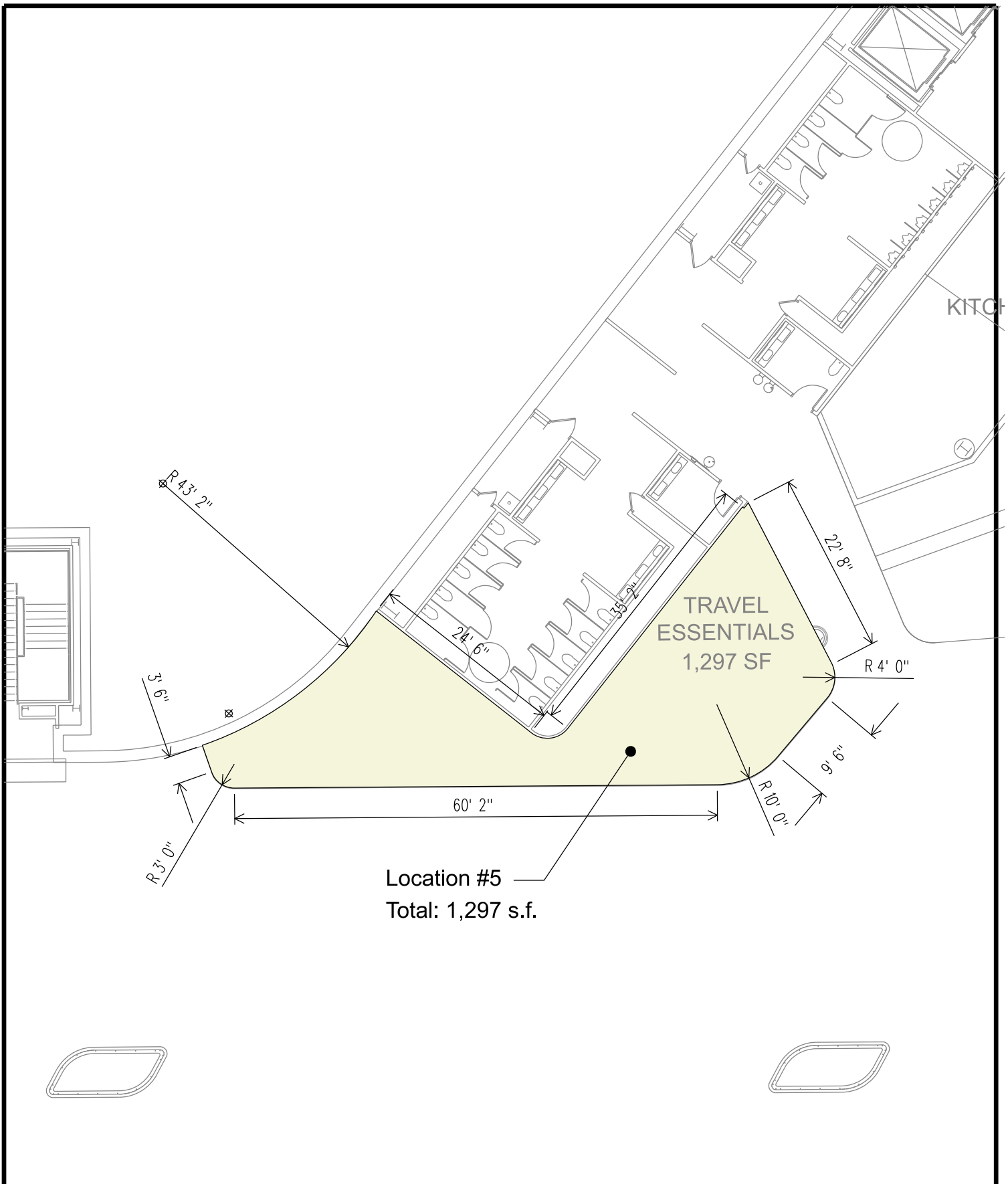
UNISON RETAIL MANAGEMENT

Scale: 1/16" = 1'-0"



Date: April, 2021

Created by CADD Services



Chicago O'Hare International Airport
Mayor • Lori Lightfoot

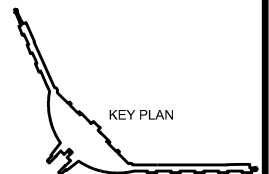
Chicago Department of Aviation
Commissioner • Jamie Rhee

UNISON RETAIL MANAGEMENT

Terminal 5 Expansion East Concourse

Location #5 - Package #7

Scale: 1/16" = 1'-0"



Date: April, 2021

Created by CADD Services