

---

## Exhibit D.19: Concessions Construction Barricade and Graphic Standards

The Chicago Department of Aviation (CDA) Concessions Program has established a construction barricade and graphic standard. The following must be adhered to by all Chicago Department of Aviation (CDA) Concessionaires.

Barricades provide a safety barrier between the construction site and passengers. The graphics are an important communication outlet that will act as a commercial or billboard for the Concessionaire and provide maximum visibility. The barricade and graphic installation and cost are the sole responsibility of the Concessionaire.

A barricade plan submittal is required at the time of the project demolition plan submission. The design and construction of all barricades requires advance written approval from the CDA POC prior to the commencement of the barricade construction. The barricade plan and graphic proof should be submitted to the CDA POC. Please contact the CDA POC with questions pertaining to the standard details below.

Due to the broad nature of construction scope, the requirements for barricades are based on the anticipated project timeline.

### Tier #1- Projects lasting more than 14 days

Requirements: Barricade height must extend three inches (3") beyond the store front height, plastic lid with no gaps, flush doors with **70%** graphics application. The Concessionaire will provide professional artwork for graphic barricade displays. Artwork should be submitted prior to production.

### Tier #2- Projects completed with evening work or projects lasting less than 14 days

Requirement: Barricade height must extend three inches (3") beyond the store front height, plastic lid with no gaps, flush doors. Wrap graphics are optional, to meet the minimum sign requirement, the Concessionaire will provide professional artwork for graphic barricade displays. Artwork should be submitted prior to sign production. Graphic application must cover at minimum, **45%** of the barricade face.

## BARRICADES

Barricade requirements are as follows:

- Barricades are to be constructed using a bracing system and a smooth, durable vertical surface that graphics may be adhered to. The entire public side of the barricade should be taped/painted as necessary. Barricades are to be straight and level.
- Barricades are required to be extended at the Concessionaire's storefront from floor to the ceiling. Where there is no ceiling, the barricade height shall be equal to or greater than three inches (3") higher than the height of the Concessionaire's storefront.
- A horizontal hard lid or plastic lid (no exposed gaps) is required for the entire length of the barricade.
- Barricades are required to have a flush access door. The door is required to be self-closing and have a combination lock; the combination shall be provided to CDA.
- Barricades may not be more than four feet (4') away from the face of Concessionaire's storefront without written permission from the CDA POC.
- A 4" black vinyl or rubber cove base is required along the entire barricade front.
- Concessionaire's contractor shall secure a plywood floor on top of the airport's flooring system to protect from damage.
- The contractor is required to install the necessary structural bracing to secure the barricade and ensure it is rigid and structurally sound.

## Exhibit D.19: Concessions Construction Barricade and Graphic Standards Cont'd.

- The contractor is required to continuously monitor the barricade and must provide all touch-up work throughout the construction period to maintain the barricade in a presentable condition.
- A 24" x 36" locked bulletin board inside a clear aluminum frame adjacent to the access door shall display the building permit, safety/security information, incident notification form, and copy of eForm.
- Barricades must be installed between the hours of 10pm – 5am.

### GRAPHICS

All graphic artwork requirements are as follows:

- Concessionaires are required to retain the services of a professional graphic or sign firm with a successful track record of producing and installing high quality, large-scale graphics.
- The Concessionaire must submit a professionally prepared graphic rendering to the CDA POC for written approval prior to fabrication. No production work should commence without the express, written approval from the CDA POC.
- The graphics are to be full color, incorporating photographs, logos, and/or iconic elements portraying key elements of the Concessionaire's business, with specific written information pertaining to the Concessionaire's store name and opening date; the text may contain Concessionaire's website.
- Graphics must be self-adhering or mounted to a smooth vertical surface that can be adhered to the barricade; no grommets, nails, screws, or other fasteners will be allowed.
- Graphics must be properly aligned without any creases, bubbles or torn edges. Graphics installed misaligned or with creases will need to be replaced.
- The graphics must to be installed within 24 hours of the barricade installation.
- Barricade graphics must be installed between the hours of 10pm – 5am.

There are multiple material choices available to reach the listed requirements. The vendors below have worked with the airport or in a similar airport environment.

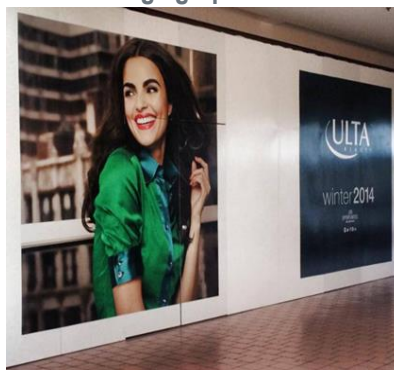
- Boston Barricade (772) 257-7170
- Britten Banner (855) 763-8204
- GSS Creative (312) 553-2111
- NuBarricade manufacturers reusable barricade panels (763) 232-3740

### Graphic Examples

Full wrap graphic



70% coverage graphic



Partial graphic displays



Design and Construction Standard Operating Procedures Concessions Projects (C-SOP Exhibits)