

January 2008  
Monthly Report



## Airport Noise Management System

Chicago O'Hare International Airport

City of Chicago  
Department of Aviation



Visit the Community Noise Resource Center  
on the Internet at

[www.flychicago.com](http://www.flychicago.com)





# Runway Use Report

Chicago O'Hare International Airport

Period: January 2008

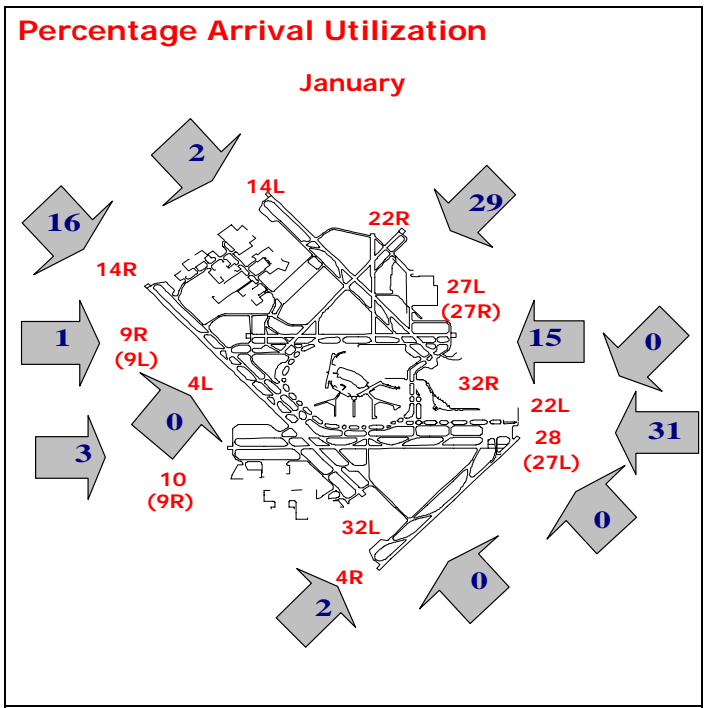
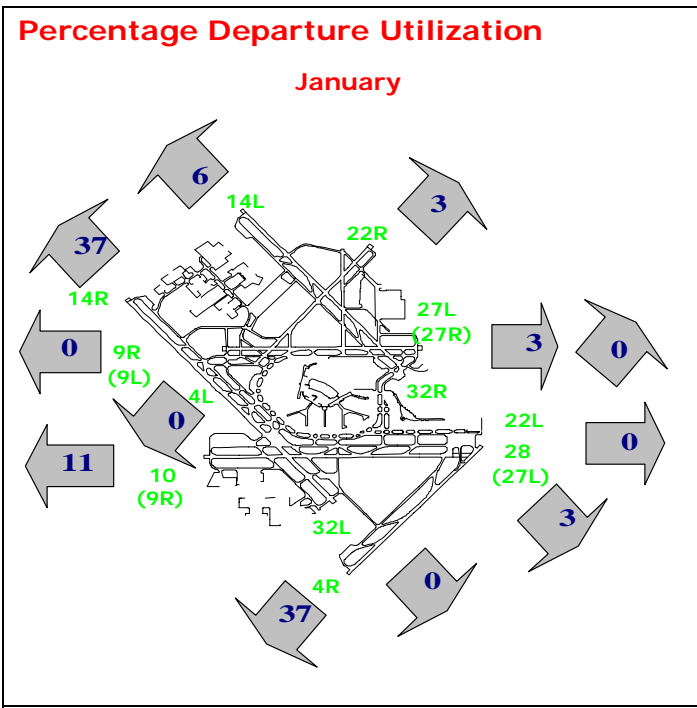
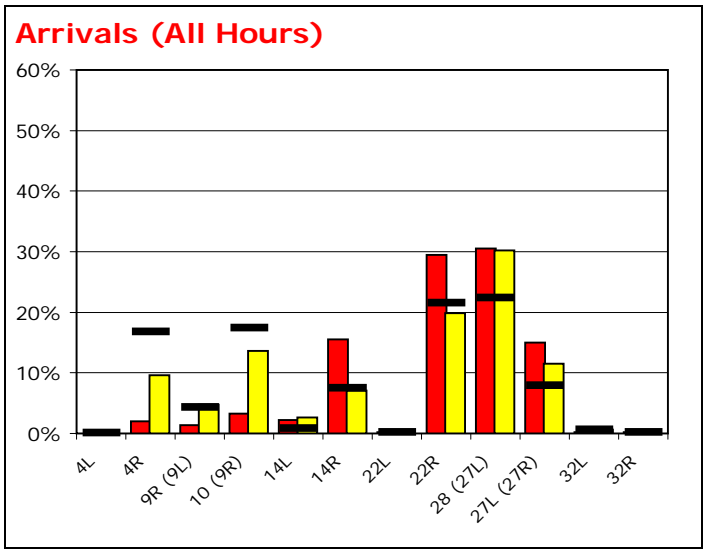
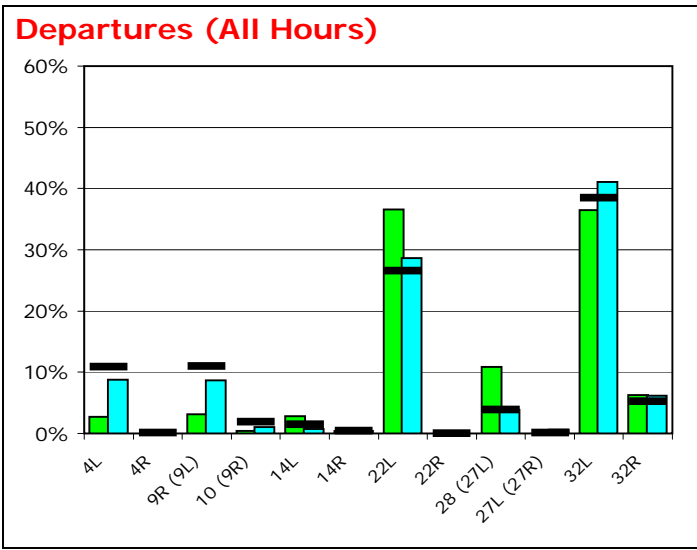
Time of Day: All Hours



## Runway Use (All Hours)

Source: Airport Noise Management System (ANMS)

		Runway Utilization <sup>1</sup>											
		4L	4R	9R (9L)	10 (9R)	14L	14R	22L	22R	28 (27L)	27L (27R)	32L	32R
<b>Average Daily Departures</b>													
January 2008	<span style="color: green;">■</span>	31	0	36	5	33	5	415	0	123	0	414	72
December 2007	<span style="color: cyan;">■</span>	102	0	101	12	8	5	334	0	45	7	479	72
12 Month Avg.	<span style="color: black;">■</span>	133	1	133	22	17	5	323	0	47	1	468	64
<b>Average Daily Arrivals</b>													
January 2008	<span style="color: red;">■</span>	0	23	16	37	25	177	2	337	349	172	3	3
December 2007	<span style="color: yellow;">■</span>	0	118	58	165	33	87	0	242	368	140	8	0
12 Month Avg.	<span style="color: black;">■</span>	1	213	55	220	10	95	3	273	283	100	8	3



<sup>1</sup> Runway 9R/27L was redesignated 10/28 on July 5, 2007. Runway 9L/27R was redesignated 9R/27L on August 30, 2007.

# Runway Use Report

Chicago O'Hare International Airport

Period: January 2008

Time of Day: 10:00 p.m. to 7:00 a.m.



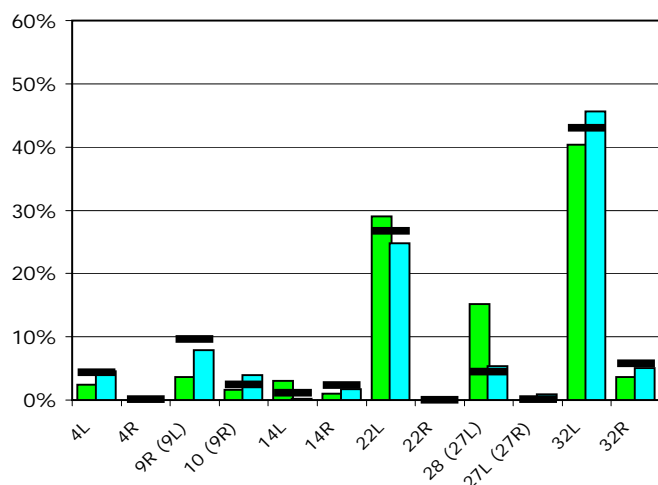
## Runway Use (10 p.m. to 7 a.m.)

Source: Airport Noise Management System (ANMS)

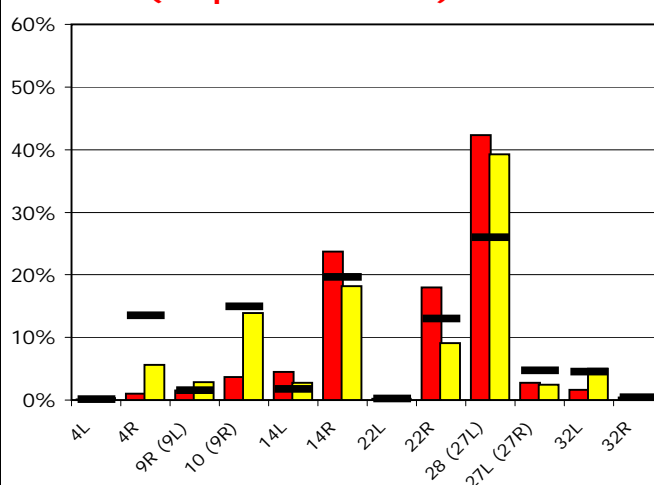
### Runway Utilization<sup>1</sup>

		4L	4R	9R (9L)	10 (9R)	14L	14R	22L	22R	28 (27L)	27L (27R)	32L	32R
<b>Average Daily Departures</b>													
January 2008	<span style="color: green;">■</span>	3	0	4	2	3	1	33	0	17	0	46	4
December 2007	<span style="color: cyan;">■</span>	6	0	10	5	0	2	32	0	7	1	60	7
12 Month Avg.	<span style="color: black;">■</span>	5	0	11	3	1	3	32	0	5	0	51	7
<b>Average Daily Arrivals</b>													
January 2008	<span style="color: red;">■</span>	0	1	2	5	6	33	0	25	59	4	2	1
December 2007	<span style="color: yellow;">■</span>	0	9	4	21	4	28	0	14	60	4	8	1
12 Month Avg.	<span style="color: black;">■</span>	0	20	2	23	3	30	0	20	39	7	7	1

### Departures (10 p.m. to 7 a.m.)

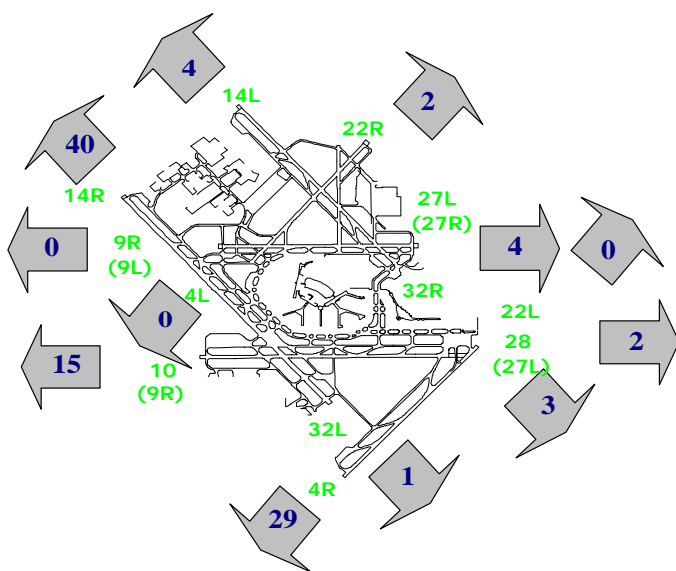


### Arrivals (10 p.m. to 7 a.m.)



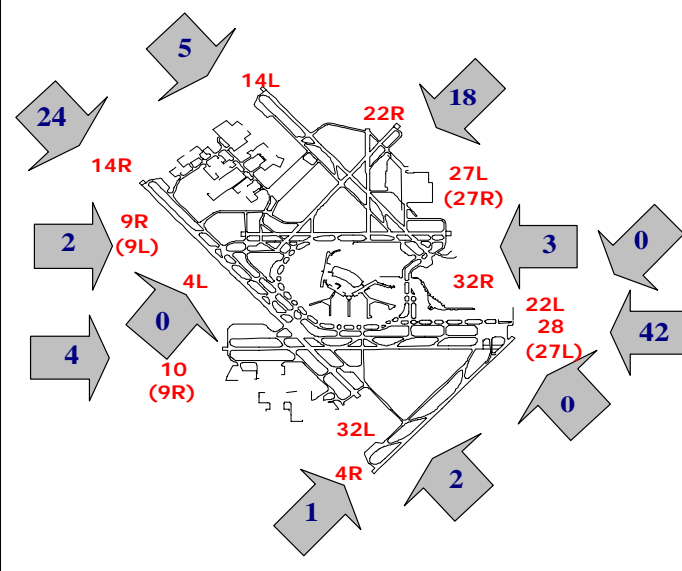
### Percentage Departure Utilization

January



### Percentage Arrival Utilization

January



<sup>1</sup> Runway 9R/27L was redesignated 10/28 on July 5, 2007. Runway 9L/27R was redesignated 9R/27L on August 30, 2007.

**Aircraft Noise Report**

Chicago O'Hare International Airport

Period: January 2008

Metric: Aircraft DNL



RMT #	Community	Last 12 Months Monitored Noise Levels												Last Jan 07	12 Month Average vs 1997 <sup>2</sup>	Modeled 1997 Values	Modeled 2000 Values	Modeled OMP Full Build Out Values
		Feb 07	Mar 07	Apr 07	May 07	Jun 07	Jul 07	Aug 07	Sep 07	Oct 07	Nov 07	Dec 07	Jan <sup>1</sup> 08					
1	Arlington Heights	59.0	61.4	61.4	61.5	62.0	61.5	62.6	61.4	61.5	60.6	60.7	59.4	60.4	61.2	63.0	63.0	50.5
2	Melrose Park	53.1	56.1	56.6	54.3	55.6	56.5	56.3	53.8	55.8	58.3	54.1	53.8	55.2	55.6	63.4	61.0	50.3
3	Bensenville	54.3	61.4	67.4	64.0	67.6	57.7	59.1	60.4	59.0	58.6	60.4	62.7	58.5	62.7	71.3	67.3	64.9
4	Schiller Park	56.3	60.3	60.8	60.6	61.2	61.8	62.4	61.8	62.3	60.1	61.3	57.8	57.9	60.8	62.6	62.6	58.8
5	Chicago	56.6	57.4	58.7	59.9	57.8	59.2	57.9	58.7	59.0	58.9	57.8	59.7	56.9	58.6	60.8	59.8	61.9
6	Chicago	54.0	55.4	57.3	56.2	54.6	54.1	57.4	57.6	57.2	56.6	57.1	55.9	53.9	56.3	61.3	59.6	57.8
7	Des Plaines	59.3	60.3	59.8	58.2	58.1	57.4	58.9	58.9	59.6	59.5	59.3	59.5	58.7	59.1	65.4	62.0	48.5
8	Des Plaines	63.6	67.4	67.8	67.4	66.4	66.1	67.6	64.9	64.7	64.4	64.7	61.2	66.9	65.9	70.0	68.8	60.8
10	Rolling Meadows	54.7	57.9	56.5	57.2	56.8	58.5	58.4	58.0	61.1	59.1	60.0	59.1	58.8	58.4	59.0	60.8	48.9
11	Chicago	53.5	56.8	57.9	58.8	57.7	58.7	59.0	58.5	58.2	56.9	55.9	54.7	55.4	57.5	60.9	60.7	50.3
12	Elk Grove Village	57.9	65.2	62.4	68.1	66.1	57.1	58.1	56.8	58.1	60.9	54.1	58.5	58.7	62.4	66.7	62.1	57.6
13	Elk Grove Village	72.4	71.9	73.5	70.5	74.8	76.1	74.7	73.3	74.1	74.5	73.5	72.4	72.2	73.7	80.0	77.6	64.6
14	Elk Grove Village	60.6	62.1	62.7	62.0	62.8	62.4	62.9	62.3	62.5	61.5	60.8	59.4	62.2	61.9	67.6	65.7	54.5
15	Franklin Park	56.7	59.8	58.0	57.4	58.5	58.4	60.4	60.6	60.0	59.3	58.9	58.7	60.2	59.0	64.1	62.6	53.6
16	Franklin Park	67.6	69.8	68.7	69.2	69.8	70.7	71.2	71.0	71.2	67.8	71.4	71.6	68.2	70.2	72.2	72.1	63.4
17	Harwood Heights	67.5	66.6	65.6	65.0	66.2	64.5	63.3	62.3	64.7	65.9	66.2	66.4	68.8	65.6	66.4	65.4	57.9
19	Stone Park	--	--	58.3	57.4	59.0	59.8	59.1	59.6	60.5	59.9	59.0	59.4	--	59.3	64.7	61.7	51.6
20	Mount Prospect	59.9	60.6	61.4	61.3	61.6	61.9	62.4	61.0	62.8	62.1	60.6	60.1	60.5	61.4	63.5	62.4	49.1
21	Mount Prospect	54.1	56.1	56.0	56.3	56.5	56.4	56.8	55.5	55.6	53.7	54.0	51.3	55.1	55.4	59.6	58.6	53.6
22	Norridge	69.2	68.3	67.4	66.7	67.9	66.0	64.9	63.6	65.8	67.0	68.0	68.0	69.0	67.2	69.2	67.7	59.2
23	Northlake	61.7	63.8	63.1	63.0	64.6	64.7	64.7	64.3	66.0	64.1	64.9	63.5	63.4	64.2	73.5	69.1	59.6
24	Park Ridge	54.1	58.0	57.8	57.6	58.4	56.8	57.4	56.0	56.2	55.6	55.8	54.8	56.5	56.7	60.3	58.8	50.6
25	Park Ridge	54.8	60.3	59.1	61.2	58.9	57.7	60.2	59.6	59.6	61.2	61.3	59.6	56.9	59.7	69.1	61.8	66.7
26	Park Ridge	55.4	59.8	60.5	60.6	59.1	58.7	61.5	58.7	57.8	59.6	59.8	59.6	57.9	59.5	64.0	61.2	59.5
27	Rosemont	57.9	64.9	64.3	66.3	66.0	64.0	66.2	64.6	63.5	63.8	64.1	62.4	56.3	64.4	73.0	67.6	70.2
28	Schiller Park	--	--	64.2	63.7	80.2	77.0	74.3	73.7	75.9	77.3	78.5	79.3	--	76.6	79.6	78.7	67.9
32	Wood Dale	63.1	--	57.4	56.3	54.4	54.7	57.8	59.4	60.6	61.4	60.7	62.6	64.4	59.8	71.2	66.4	63.8
34	Elk Grove Village	59.3	59.5	57.9	56.9	58.7	60.1	57.5	59.1	57.5	57.7	58.7	59.2	59.1	58.6	66.3	61.2	61.4
35	Unincorporated Cook	66.0	63.2	61.7	60.9	61.5	63.5	62.2	61.7	63.7	63.4	63.6	64.6	--	63.2	70.8	65.4	54.7
37	Mount Prospect	49.5	52.1	52.4	53.0	54.0	53.3	55.7	55.2	51.8	55.4	52.4	52.3	49.3	53.4	55.1	57.0	50.5

--No data due to monitor malfunction.

1. **Red** represents an increase of 1 dB or more from the same month of the previous year (7 monitors). **Green** represents a decrease of 1dB or more from the same month of the previous year (10 monitors).

2. **Red** represents an increase of 1 dB or more from the modeled 1997 noise contour level (0 monitors). **Green** represents a decrease of 1dB or more from the modeled 1997 noise contour level (28 monitors).






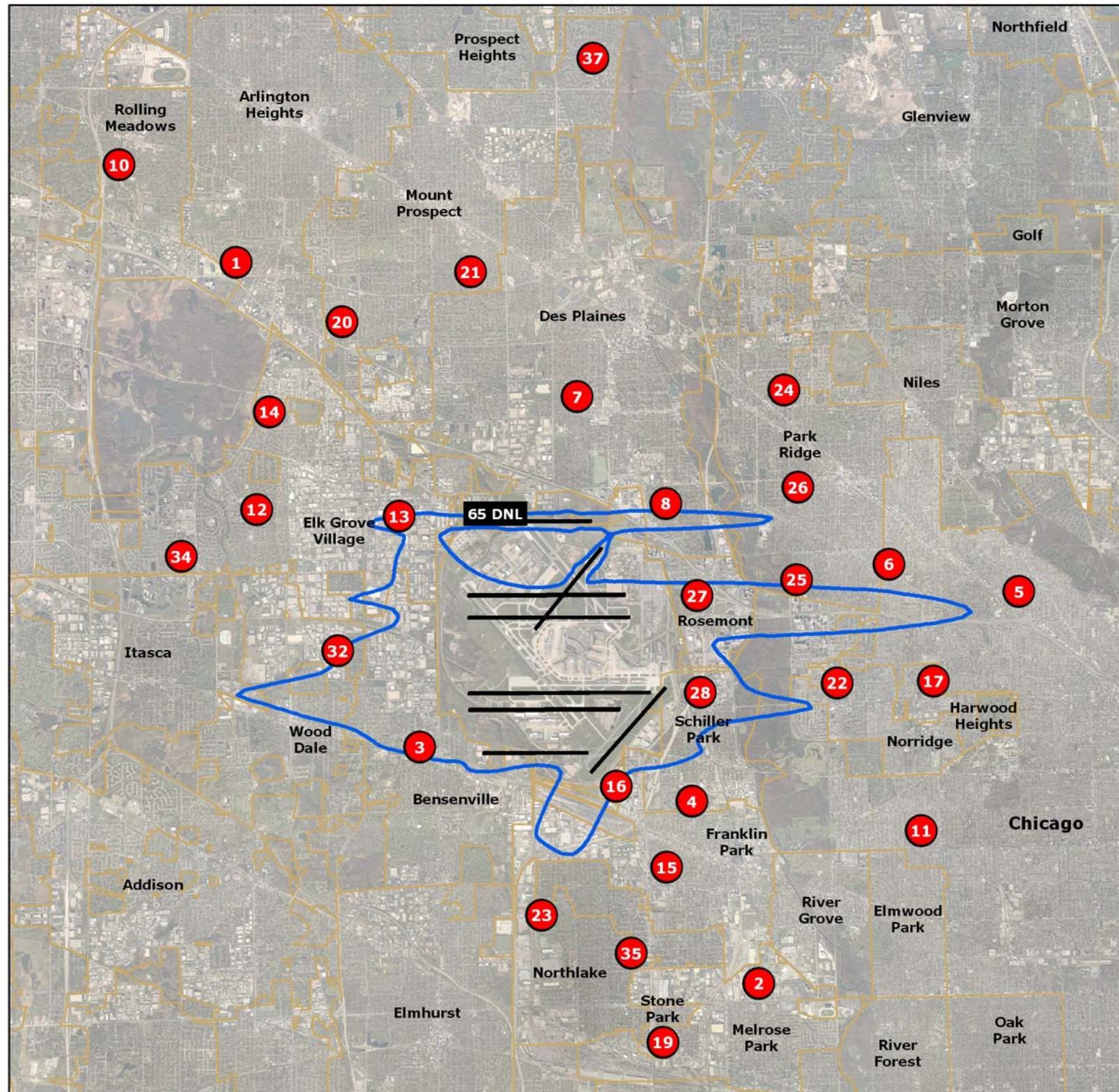
**O'Hare  
International  
Airport**

## OMP Full Build Out Noise Contour

**City of Chicago**  
Richard M. Daley  
Mayor  
**Department of Aviation**  
Nuria I. Fernandez  
Commissioner of Aviation


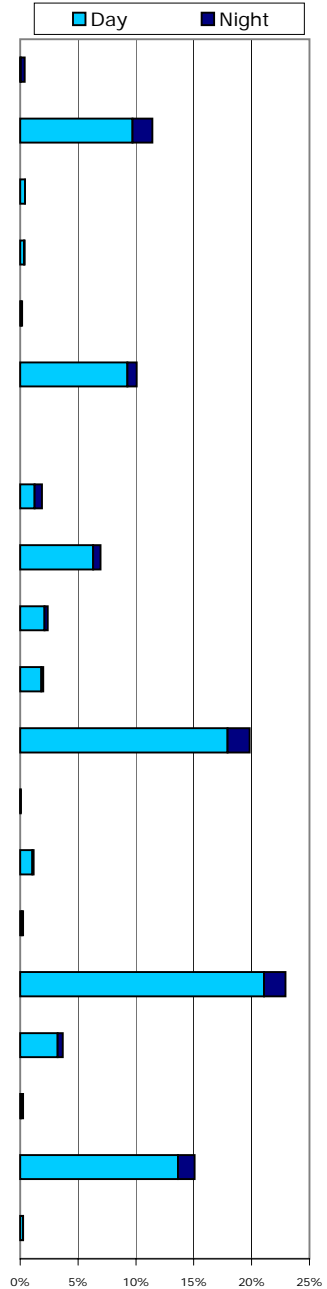


















### Legend

-  Noise Monitors (30)
-  Future Runways
-  Noise Contour  
(Measured in DNL - Day/Night  
Average Noise Level)
-  Community Boundaries



**Aircraft Fleet Mix Report**  
 Chicago O'Hare International Airport  
 Period: January 2008



Jet Aircraft	Average Operations Per Day (All Hours)	Average Operations Per Night (10 p.m. - 7 a.m.)	Percent of Total All Hours	Percent of Total 10 p.m. - 7 a.m.	Percentage of Total
 A300	9	8	0.4%	3.2%	
 A320	251	38	11.5%	15.4%	
 A330	10	1	0.5%	0.4%	
 A340	9	2	0.4%	0.8%	
 B720	4	2	0.2%	0.8%	
 B737	221	18	10.1%	7.3%	
 B730	0	0	0.0%	0.0%	
 B747	42	15	1.9%	6.1%	
 B757	153	15	7.0%	6.1%	
 B767	53	7	2.4%	2.8%	
 B777	44	4	2.0%	1.6%	
 CARJ	435	42	19.8%	17.0%	
 DC80	2	2	0.1%	0.8%	
 DC90	26	3	1.2%	1.2%	
 DC10	6	3	0.3%	1.2%	
 E145	503	41	22.9%	16.6%	
 E170	81	10	3.7%	4.0%	
 MD11	6	4	0.3%	1.6%	
 MD80	331	32	15.1%	12.9%	
<b>Other Aircraft</b>	6	0	0.3%	0.1%	
<b>Total</b>	<b>2,192</b>	<b>247</b>	<b>100.0%</b>	<b>100.0%</b>	



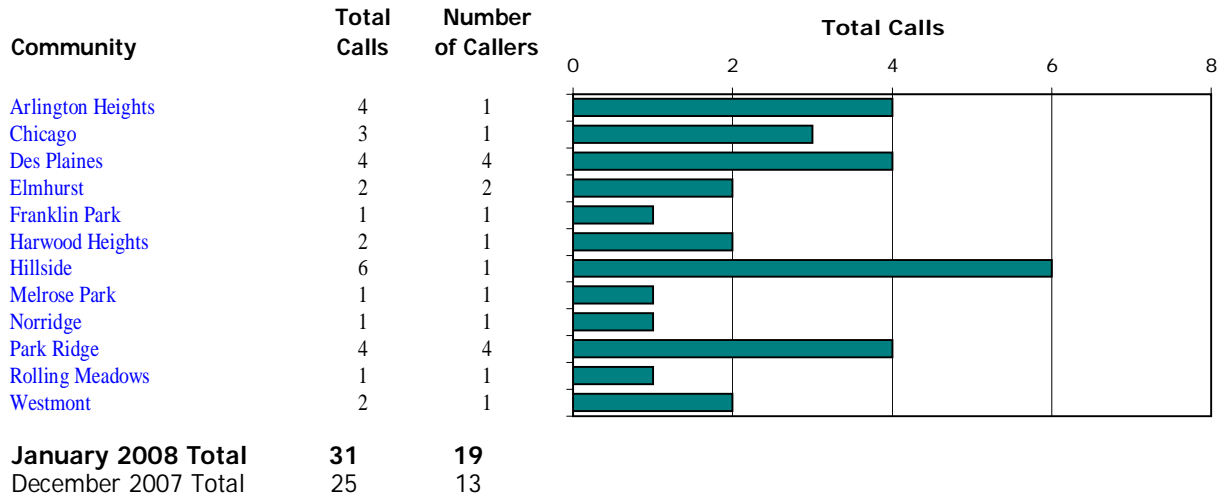
**Noise Hotline Report**

Chicago O'Hare International Airport  
January 2008



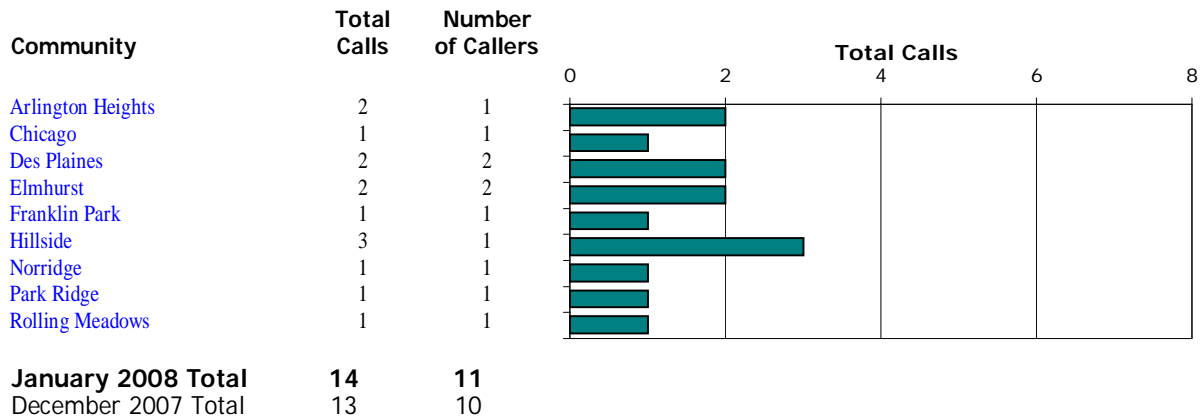
**Monthly Hotline Calls by Community<sup>1</sup>**

All Hours



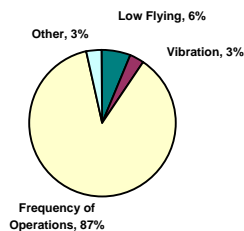
**Monthly Hotline Calls by Community<sup>1</sup>**

Nighttime - 10:00 p.m. - 7:00 a.m.



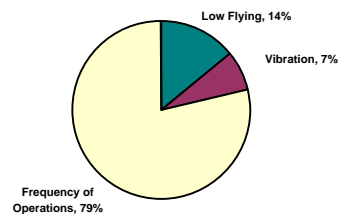
**Nature of Hotline Call Noise Complaint**

All Hours



**Nature of Hotline Call Noise Complaint**

Nighttime - 10:00 p.m. - 7:00 a.m.



<sup>1</sup>Complaint calls made within the State of Illinois.