

November 2008
Monthly Report



Airport Noise Management System

Chicago O'Hare International Airport

City of Chicago
Department of Aviation



Visit the Community Noise Resource Center
on the Internet at

www.flychicago.com



Airport Noise Management System Monthly Report Report Descriptions

Background

Installed in 1996, the Airport Noise Management System (ANMS) enables the City of Chicago to monitor the amount of noise being generated over the communities surrounding O'Hare by the aircraft operating at the Airport. The ANMS collects, analyzes and processes data from a number of sources of information including a network of 30 noise monitors around O'Hare, FAA radar data, weather data and calls to the noise hotline. Over 120,000 flights and 400,000 noise events are recorded by the ANMS each month for the Chicago Airport System. The City of Chicago and the O'Hare Noise Compatibility Commission utilize data from the ANMS to facilitate the development and management of noise abatement programs at the Airport. The following reports summarize pertinent monthly information from that data concerning the noise levels and operations at the Airport.

Runway Use Report

O'Hare has seven runways that are all utilized at different times depending primarily upon the prevailing wind conditions on the airfield, as well as any runway maintenance. Aircraft performance requirements make it necessary for aircraft to depart and land into the wind for safety purposes.

The Runway Use Report presents the average percentage of use for each runway for the current month, the previous month and a 12-month average. The percentage of use for departures and arrivals is shown graphically for each runway. This data is for all hours of the day and for all aircraft types. Also shown is the runway use for the nighttime hours (10 p.m. to 7 a.m.).

Highlights for **November 2008** include:

Departures

Most used departure runway: **32L – 42%**
32L departures increased by **9%** from October 2008
9R departures decreased by **10%** from October 2008

Arrivals

Most used arrival runway: **28 – 28%**
28 arrivals increased by **12%** from October 2008
10 arrivals decreased by **15%** from October 2008

Aircraft Noise Report

The Aircraft Noise Report summarizes noise measurements from each of the 30 noise monitors located around the Airport. The data presented summarizes the Day-Night Average Noise Levels (DNL's). DNL is a 24-hour time-averaged sound exposure level with a 10 decibel (dB) nighttime (10 p.m. to 7 a.m.) weighting to account for the lower background noise levels during the nighttime hours.

The data displays the measured aircraft DNL for each month and its comparison to the same month of the previous year, and it compares the current month to the 12-month average. The aircraft noise report identifies noise from the existing aircraft operations at O'Hare. The modeled values for each monitor are shown for 1997, 2000 and the OMP Full Build Out Noise Contours.

The aircraft noise levels for each monitor vary from month to month. This is primarily due to runways being utilized differently under changing wind conditions which effect where the aircraft fly.

Aircraft Fleet Mix Report

The Aircraft Fleet Mix Report summarizes the number and type of aircraft operating at O'Hare International Airport during both all hours of the day and during the nighttime hours.

In 1990, Congress enacted legislation to eliminate all Stage 2 aircraft operating in the continental United States by the year 2000. In response, the FAA created a program to "phase-out" the older, louder Stage 2 aircraft over a ten-year period to achieve full compliance by the 2000 deadline. As of January 2000, all aircraft operating at O'Hare and within the United States were Stage 3. Stage 3 aircraft, such as the Boeing 757 (B757) and new Boeing 737's (B737) use a quieter type of engine that significantly reduces noise at the source. Also, a Stage 3 aircraft can be a previous Stage 2 aircraft with the engines retrofitted with a "Hush-kit" such as a Boeing 727 (B72Q), Boeing 737-200 (B73Q) and DC-9 (DC9Q). More than **98%** of the operations at O'Hare International Airport are originally certified as Stage 3 aircraft.

Noise Hotline Report

The Department of Aviation maintains a toll-free noise hotline (**1-800-435-9569**) for citizens to express their concern about particular incidents or aircraft noise levels in general. The noise hotline report summarizes the number of calls received and where the callers were located. The tabular report lists the number of calls by community as well as the number of individual callers. The graph at the bottom of the page illustrates the nature of the complaint calls during the specified month.

Also shown are complaint calls by month displaying seasonal trends. The chart at the bottom of this page illustrates the trend in monthly complaint calls. Complaint totals for 2006 include all calls made to the O'Hare Noise Hotline. Complaint totals for 2007 and beyond only include calls made within the State of Illinois to the O'Hare Noise Hotline.

Complaint Calls by Month			
Month	2006	2007	2008
January	62	66	31
February	66	23	20
March	85	105	60
April	70	69	63
May	143	132	92
June	143	166	140
July	113	185	138
August	158	145	210
September	204	149	151
October	112	133	123
November	97	50	271
December	109	25	
Total Calls	1,362	1,248	1,299

Runway Use Report

Chicago O'Hare International Airport

Period: November 2008

Time of Day: All hours

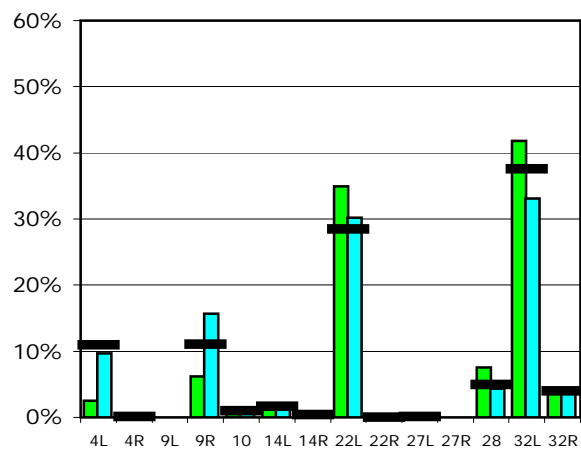


Runway Use (All hours)

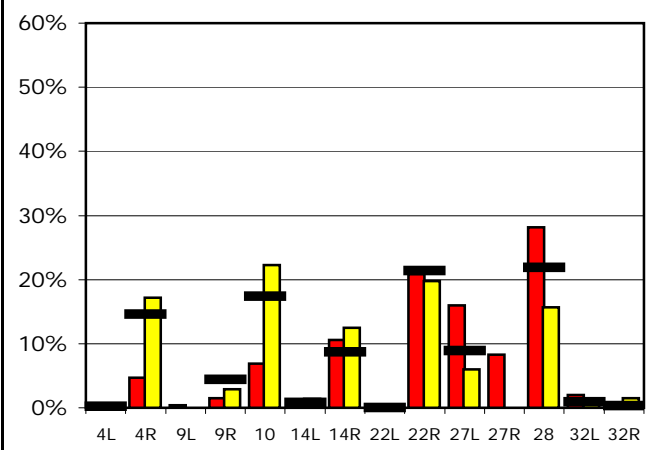
Source: Airport Noise Management System (ANMS)

		Runway Utilization ¹													
		4L	4R	9L	9R	10	14L	14R	22L	22R	27L	27R	28	32L	32R
Average Daily Departures															
November 2008		26	0	0	65	6	22	2	365	0	1	0	79	437	42
October 2008		114	1	n/a	185	6	24	4	355	0	0	n/a	52	390	47
12 Month Avg.		116	1	n/a	117	10	18	4	301	0	1	n/a	52	397	42
Average Daily Arrivals															
November 2008		0	50	5	16	75	8	115	0	227	173	90	305	22	0
October 2008		0	211	n/a	36	273	17	154	0	243	74	n/a	193	10	18
12 Month Avg.		2	162	n/a	49	192	9	96	0	236	98	n/a	241	10	3

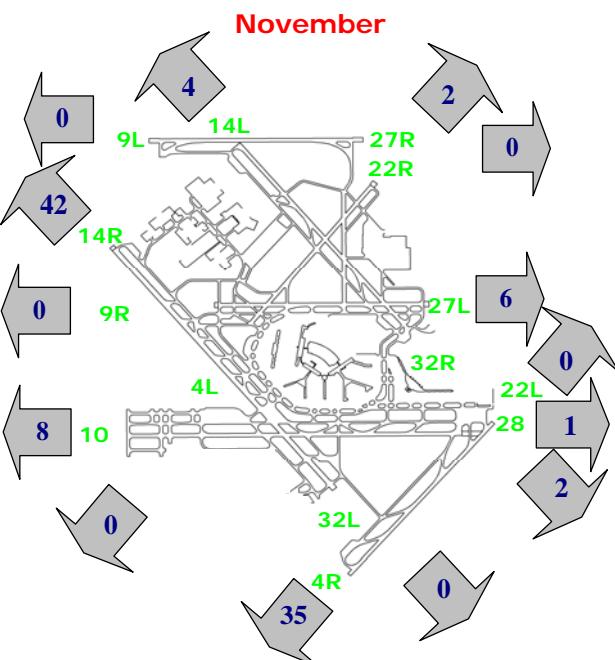
Departures (All hours)



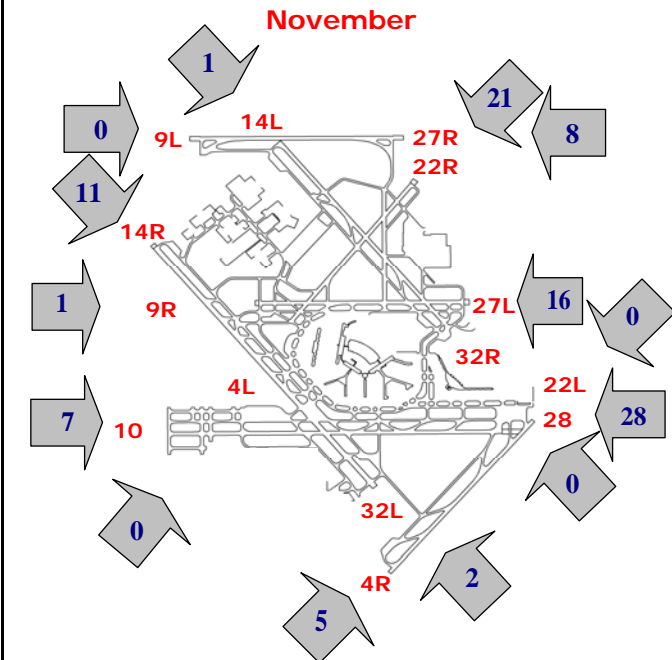
Arrivals (All hours)



Percentage Departure Utilization



Percentage Arrival Utilization



¹ Runway 9L/27R was commissioned on November 20, 2008

Runway Use Report

Chicago O'Hare International Airport
 Period: November 2008
 Time of Day: 10:00 p.m. to 7:00 a.m.

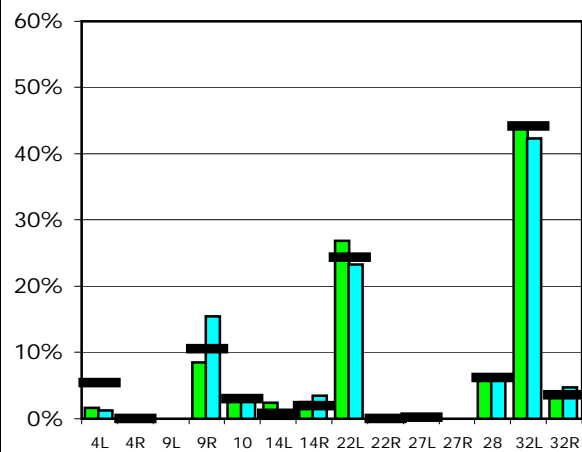


Runway Use (10 p.m. to 7 a.m.)

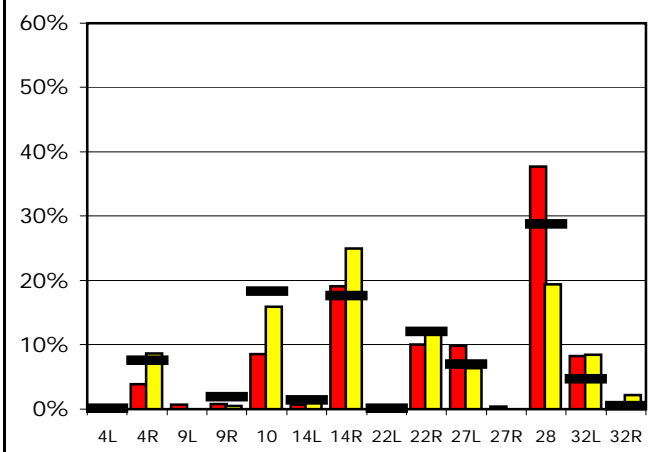
Source: Airport Noise Management System (ANMS)

		Runway Utilization ¹													
		4L	4R	9L	9R	10	14L	14R	22L	22R	27L	27R	28	32L	32R
Average Daily Departures															
November 2008		1	0	0	7	3	2	2	22	0	0	0	5	36	3
October 2008		1	0	n/a	15	3	0	3	23	0	0	n/a	6	41	5
12 Month Avg.		5	0	n/a	10	3	1	2	24	0	0	n/a	6	44	4
Average Daily Arrivals															
November 2008		0	4	1	1	9	1	20	0	11	10	0	40	9	0
October 2008		0	11	n/a	1	19	1	30	0	15	8	n/a	24	10	3
12 Month Avg.		0	10	n/a	2	23	2	22	0	15	9	n/a	36	6	1

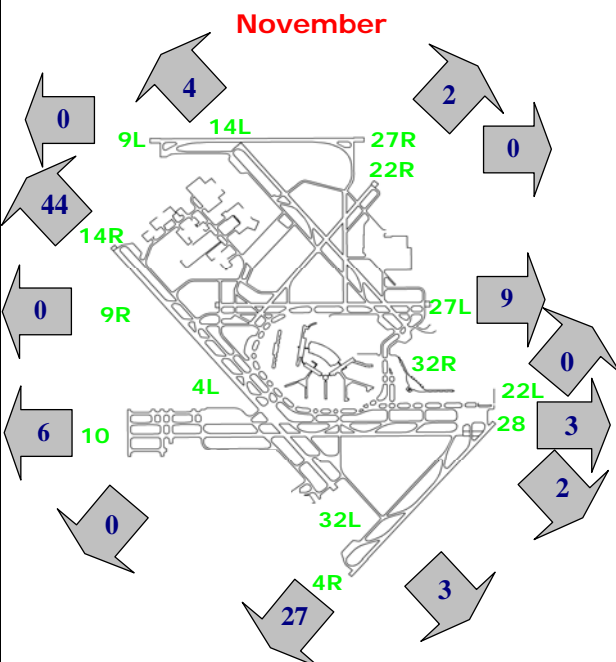
Departures (10 p.m. to 7 a.m.)



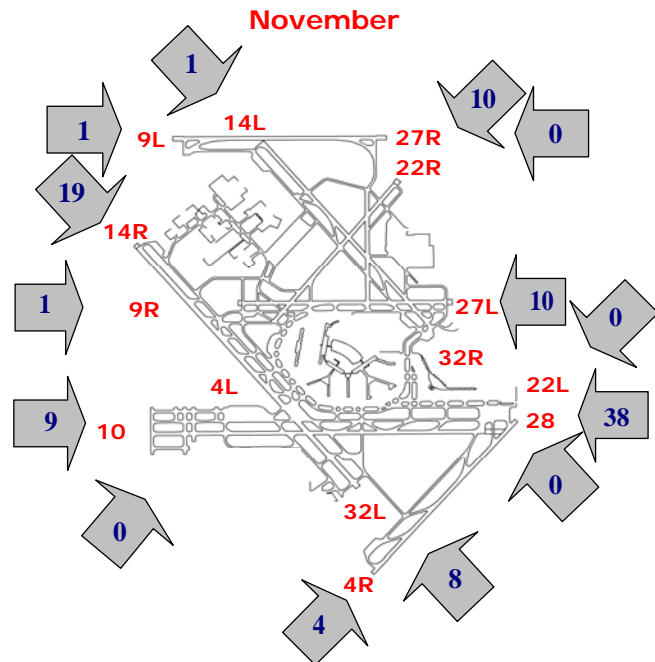
Arrivals (10 p.m. to 7 a.m.)



Percentage Departure Utilization



Percentage Arrival Utilization



¹ Runway 9L/27R was commissioned on November 20, 2008

Aircraft Noise Report

Chicago O'Hare International Airport
 Period: November 2008
 Metric: Aircraft DNL



RMT #	Community	Last 12 Months Monitored Noise Levels											Last Nov 07	12 Month Average vs 1997 ²	Modeled 1997 Values	Modeled 2000 Values	Modeled OMP Full Build Out Values	
		Dec 07	Jan 08	Feb 08	Mar 08	Apr 08	May 08	Jun 08	Jul 08	Aug 08	Sep 08	Oct 08						Nov ¹ 08
1	Arlington Heights	60.7	59.4	58.6	61.5	61.6	61.7	61.6	61.7	61.8	61.3	61.0	59.4	60.6	60.9	63.0	63.0	50.5
2	Melrose Park	54.1	53.8	52.4	52.9	54.7	55.7	55.7	55.0	55.3	58.7	58.3	58.6	58.3	55.4	63.4	61.0	50.3
3	Bensenville	60.4	62.7	59.2	58.4	59.8	59.5	61.3	60.5	61.3	57.8	60.2	61.3	58.6	60.2	71.3	67.3	64.9
4	Schiller Park	61.3	57.8	57.2	57.6	59.3	60.1	60.4	58.5	57.7	57.0	60.1	56.9	60.1	58.7	62.6	62.6	58.8
5	Chicago	57.8	59.7	56.4	56.7	57.7	58.7	59.5	60.4	59.0	59.7	58.8	58.7	58.9	58.6	60.8	59.8	61.9
6	Chicago	57.1	55.9	54.5	57.6	57.8	58.9	58.0	58.0	58.4	58.2	58.5	56.6	56.6	57.5	61.3	59.6	57.8
7	Des Plaines	59.3	59.5	58.3	60.9	57.4	58.0	57.9	57.9	58.3	56.5	55.0	51.0	59.5	57.5	65.4	62.0	48.5
8	Des Plaines	64.7	61.2	63.3	68.5	66.2	67.3	65.2	65.4	67.4	66.6	64.5	61.5	64.4	65.1	70.0	68.8	60.8
10	Rolling Meadows	60.0	59.1	56.3	58.7	59.4	59.7	60.6	59.0	59.5	60.1	60.0	58.9	59.1	59.3	59.0	60.8	48.9
11	Chicago	55.9	54.7	54.6	58.3	59.4	59.3	58.2	56.4	59.0	58.4	58.7	55.1	56.9	57.3	60.9	60.7	50.3
12	Elk Grove Village	54.1	58.5	56.4	58.2	58.5	60.7	62.0	61.6	58.1	61.4	60.3	61.7	60.9	59.3	66.7	62.1	57.6
13	Elk Grove Village	73.5	72.4	70.0	73.7	74.6	75.3	76.6	75.8	75.4	75.7	75.0	74.0	74.5	74.3	80.0	77.6	64.6
14	Elk Grove Village	60.8	59.4	59.5	62.3	62.3	63.5	63.1	63.3	63.1	62.8	62.0	61.3	61.5	62.0	67.6	65.7	54.5
15	Franklin Park	58.9	58.7	55.0	58.0	58.7	58.2	58.7	56.7	56.9	60.5	60.1	60.2	59.3	58.4	64.1	62.6	53.6
16	Franklin Park	71.4	71.6	67.2	70.6	65.8	72.4	70.3	69.2	68.6	68.2	66.8	67.4	67.8	69.1	72.2	72.1	63.4
17	Harwood Heights	66.2	66.4	65.1	64.4	65.4	65.4	65.6	66.1	64.8	65.3	64.9	66.0	65.9	65.5	66.4	65.4	57.9
19	Stone Park	59.0	59.4	57.8	57.5	58.1	59.8	61.0	60.6	58.6	58.5	56.8	56.7	59.9	58.7	64.7	61.7	51.6
20	Mount Prospect	60.6	60.1	60.0	61.7	62.1	61.1	60.0	60.6	60.7	61.1	61.6	59.8	62.1	60.8	63.5	62.4	49.1
21	Mount Prospect	54.0	51.3	52.8	56.2	55.7	56.3	54.3	55.3	56.4	55.3	55.8	53.5	53.7	54.7	59.6	58.6	53.6
22	Norridge	68.0	68.0	67.2	66.2	67.2	66.3	66.1	67.3	66.8	63.4	63.1	67.3	67.0	66.4	69.2	67.7	59.2
23	Northlake	64.9	63.5	61.9	62.4	64.3	62.4	65.1	64.5	62.3	65.7	63.7	60.9	64.1	63.5	73.5	69.1	59.6
24	Park Ridge	55.8	54.8	54.4	58.0	56.8	57.2	56.6	57.5	56.9	55.4	53.3	49.7	55.6	55.5	60.3	58.8	50.6
25	Park Ridge	61.3	59.6	60.5	61.3	64.1	61.4	61.4	60.6	62.6	59.1	57.8	56.2	61.2	60.5	69.1	61.8	66.7
26	Park Ridge	59.8	59.6	56.7	60.0	57.3	---	---	58.0	60.1	58.5	56.3	53.0	59.6	57.9	64.0	61.2	59.5
27	Rosemont	64.1	62.4	61.3	65.1	65.0	65.7	65.7	64.1	66.4	64.8	62.5	60.7	63.8	64.0	73.0	67.6	70.2
28	Schiller Park	78.5	79.3	78.2	76.1	77.2	76.3	76.7	78.3	75.9	76.4	73.6	72.7	77.3	76.6	79.6	78.7	67.9
32	Wood Dale	60.7	62.6	60.4	60.0	59.9	57.4	58.4	58.4	56.9	56.8	55.8	55.6	61.4	58.6	71.2	66.4	63.8
34	Elk Grove Village	58.7	59.2	59.6	61.2	60.3	58.2	58.4	58.2	57.1	57.3	57.7	58.3	57.7	58.7	66.3	61.2	61.4
35	Unincorporated Cook	63.6	65.6	62.4	62.7	64.3	64.5	66.6	66.5	62.6	60.1	58.9	58.4	63.4	63.0	70.8	65.4	54.7
37	Mount Prospect	52.4	52.3	51.8	54.0	54.7	55.3	54.4	54.4	55.4	54.6	56.5	53.6	55.4	54.1	55.1	57.0	50.5

--No data due to monitor malfunction.

1. **Red** represents an increase of 1 dB or more from the same month of the previous year (1 monitor). **Green** represents a decrease of 1dB or more from the same month of the previous year (16 monitors).
2. **Red** represents an increase of 1 dB or more from the modeled 1997 noise contour level (0 monitors). **Green** represents a decrease of 1dB or more from the modeled 1997 noise contour level (28 monitors).

Aircraft Noise Report - Portable Noise Monitors

Chicago O'Hare International Airport

Period: November 2008

Metric: Aircraft DNL



<i>RMT #</i>	<i>Community</i>	<i>Monitored Noise Levels</i>											<i>Year To Date</i>	
		<i>Dec 07</i>	<i>Jan 08</i>	<i>Feb 08</i>	<i>Mar 08</i>	<i>Apr 08</i>	<i>May 08</i>	<i>June 08</i>	<i>July 08</i>	<i>Aug 08</i>	<i>Sep 08</i>	<i>Oct 08</i>		<i>Nov 08</i>
29	Wood Dale		62.5	62.4	62.8	65.6	63.6	---	62.5	65.1	62.7	63.1	62.0	63.4
30	Wood Dale				45.9	53.6	52.8	56.7	53.6	55.1	58.4	55.7	54.2	54.9
33	Park Ridge		53.8	52.9	55.7	58.3	65.2	57.6	57.2	62.3	58.8	58.3	56.8	59.4








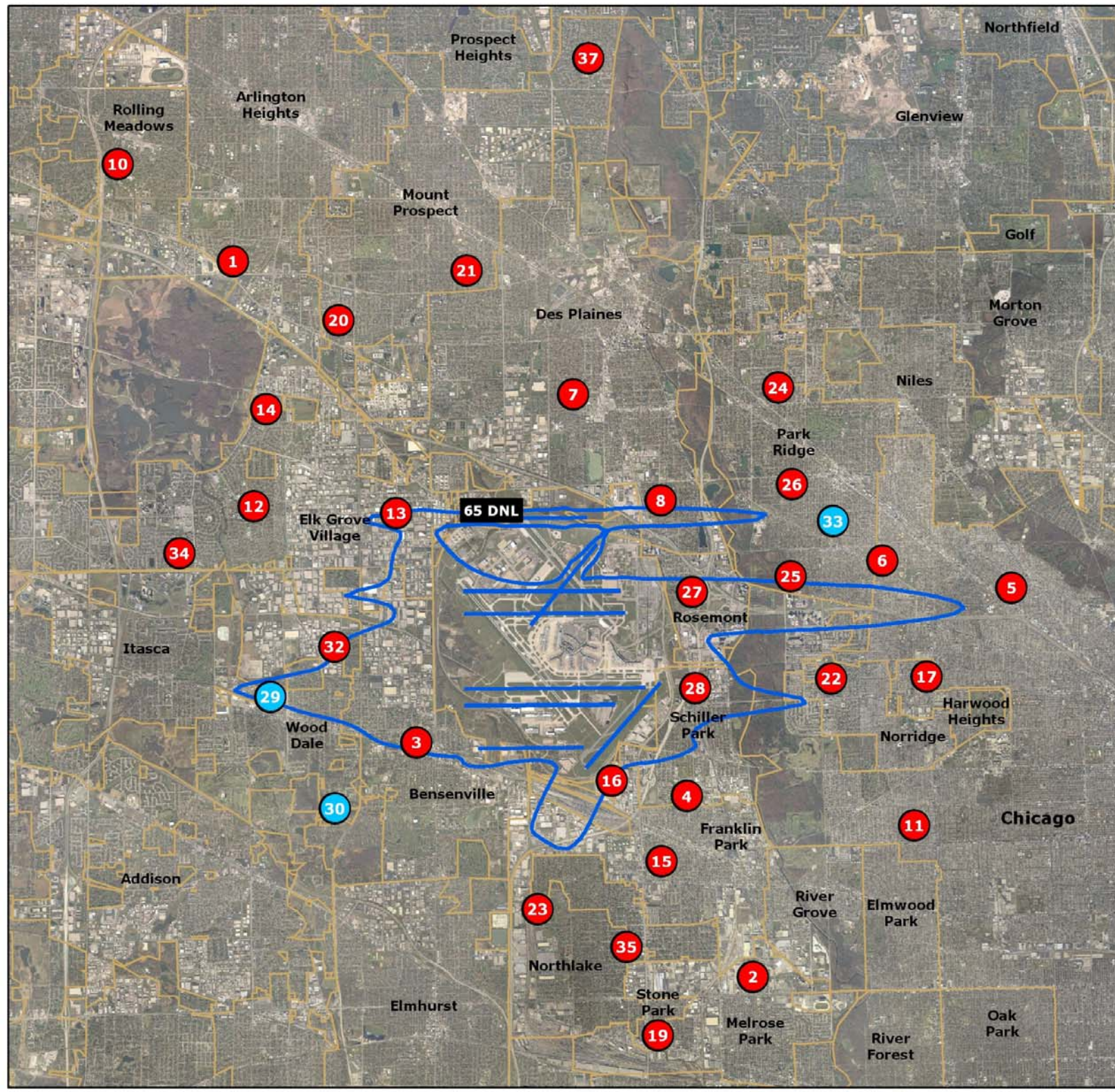
**O'Hare
International
Airport**

Remote Monitoring Terminals (RMTs)

City of Chicago
Richard M. Daley
Mayor
Department of Aviation
Richard L. Rodriguez
Commissioner


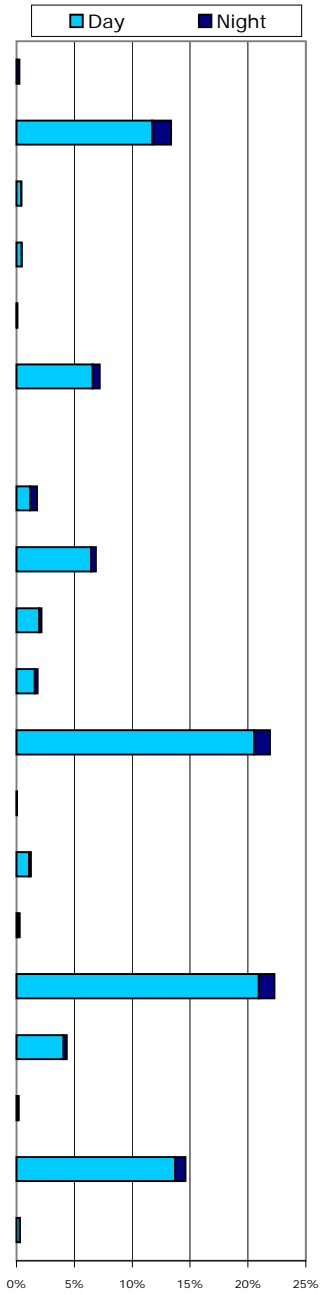


















Legend

-  Existing RMT Sites (30)
-  Proposed RMT Sites for the OMP (3)
-  Future Runways
-  O'Hare Modernization Program Full Build Out Noise Contour (65 DNL)
-  Community Boundaries



Aircraft Fleet Mix Report
 Chicago O'Hare International Airport
 Period: November 2008



Jet Aircraft	Average Operations Per Day (All Hours)	Average Operations Per Night (10 p.m. - 7 a.m.)	Percent of Total (All Hours)	Percent of Total (10 p.m. - 7 a.m.)	Percentage of Total
 A300	6	5	0.3%	2.9%	
 A320	277	34	13.4%	18.7%	
 A330	9	0	0.4%	0.2%	
 A340	10	1	0.5%	0.4%	
 B72Q	2	2	0.1%	1.0%	
 B737	149	13	7.2%	7.0%	
 B73Q	0	0	0.0%	0.0%	
 B747	37	13	1.8%	7.2%	
 B757	142	9	6.9%	4.9%	
 B767	45	5	2.2%	2.5%	
 B777	38	5	1.8%	2.9%	
 CARJ	454	29	21.9%	15.9%	
 DC8Q	1	1	0.0%	0.5%	
 DC9Q	26	4	1.3%	2.1%	
 DC10	6	4	0.3%	2.0%	
 E145	461	29	22.3%	15.7%	
 E170	90	7	4.4%	3.6%	
 MD11	5	3	0.2%	1.8%	
 MD80	302	19	14.6%	10.3%	
Other Aircraft	7	1	0.3%	0.6%	
Total	2,068	183	100.0%	100.0%	

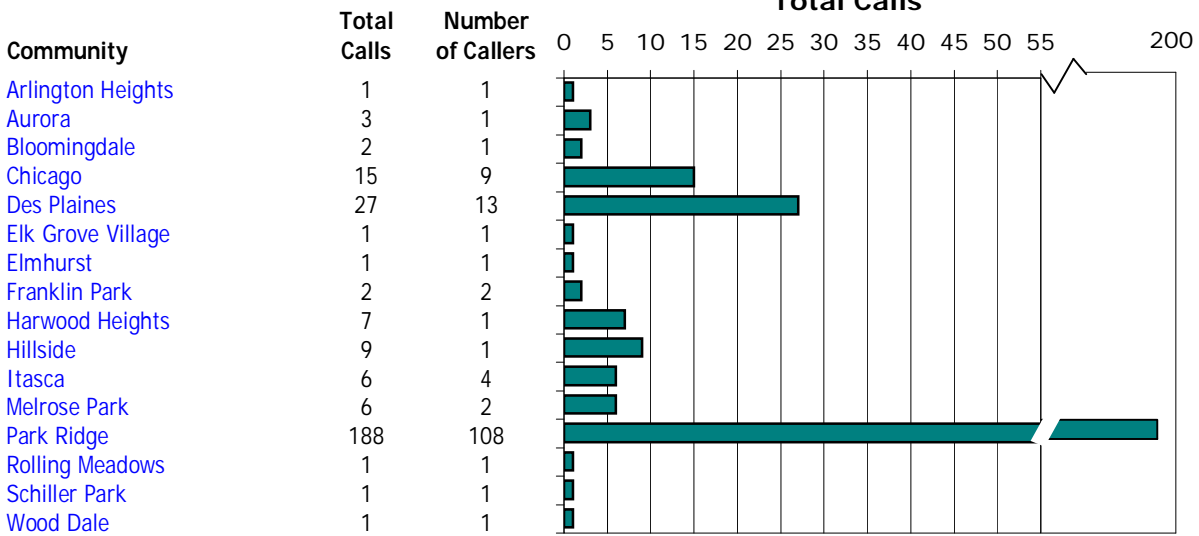
Noise Hotline Report

Chicago O'Hare International Airport
November 2008



Monthly Hotline Calls by Community¹

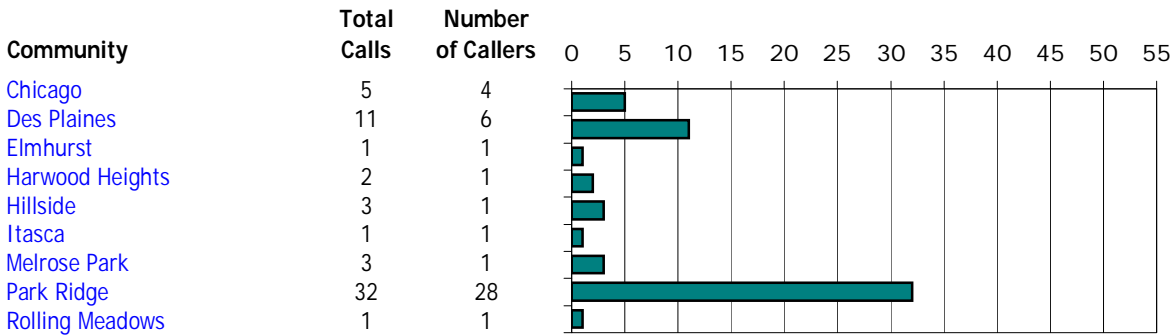
All Hours



November 2008 Total **271** **148**
 October 2008 Total 123 63

Monthly Hotline Calls by Community¹

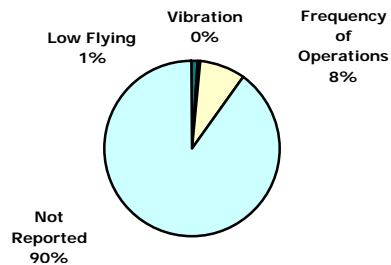
Nighttime - 10:00 p.m. - 7:00 a.m.



November 2008 Total **59** **44**
 October 2008 Total 55 38

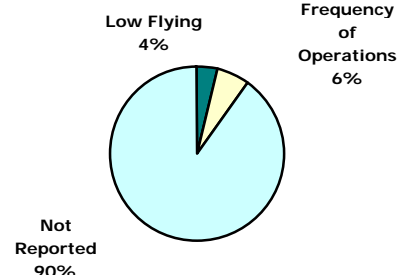
Nature of Hotline Call Noise Complaint

All Hours



Nature of Hotline Call Noise Complaint

Nighttime - 10:00 p.m. - 7:00 a.m.



¹ Complaint calls made within the State of Illinois.