

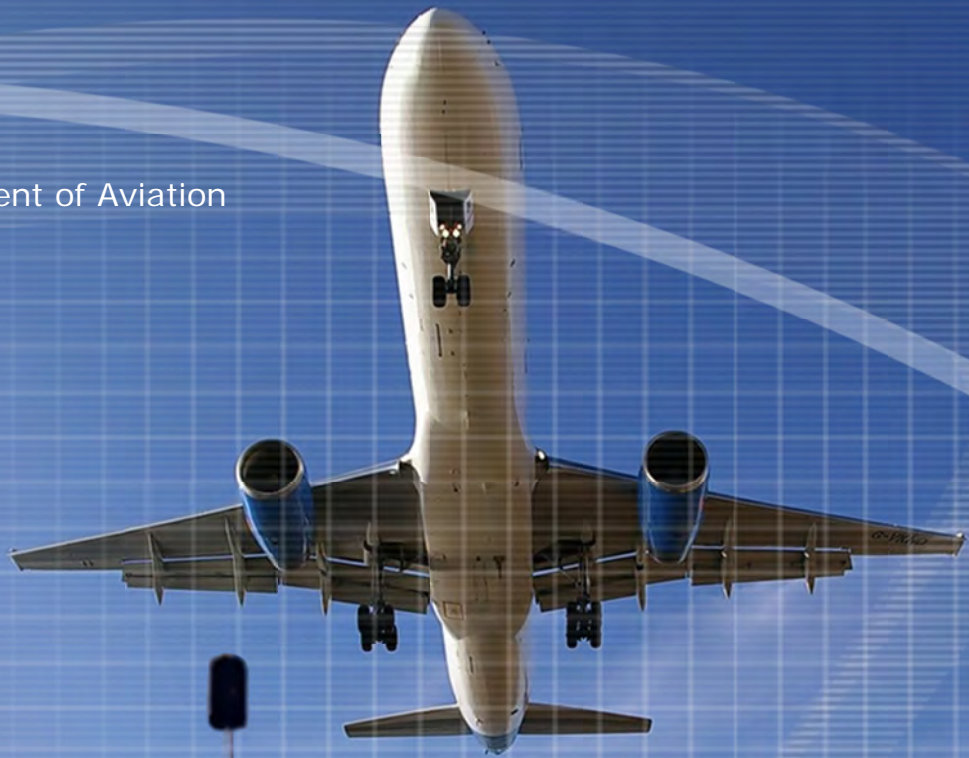
April 2011
Monthly Report



Airport Noise Management System

Chicago O'Hare International Airport

Chicago
Department of Aviation



Visit the Community Noise Resource Center
on the Internet at

www.flychicago.com

Airport Noise Management System Monthly Report

Report Descriptions



Background

Installed in 1996, the Airport Noise Management System (ANMS) enables the City of Chicago to monitor the amount of noise being generated over the communities surrounding O'Hare by the aircraft operating at the Airport. The ANMS collects, analyzes and processes data from a number of sources of information including a network of 33 noise monitors around O'Hare, FAA radar data, weather data and noise complaints. Over 120,000 flights and 400,000 noise events are recorded by the ANMS each month for the Chicago Airport System. The City of Chicago and the O'Hare Noise Compatibility Commission utilize data from the ANMS to facilitate the development and management of noise abatement programs at the Airport. The following reports summarize pertinent monthly information from that data concerning the noise levels and operations at the Airport.

Runway Use Report

O'Hare has seven runways that are all utilized at different times depending primarily upon the prevailing wind conditions on the airfield, as well as any runway maintenance. Aircraft performance requirements make it necessary for aircraft to depart and land into the wind for safety purposes.

The Runway Use Report presents the average percentage of use for each runway for the current month, the previous month and a 12-month average. The percentage of use for departures and arrivals is shown graphically for each runway. This data is for all hours of the day and for all aircraft types. Also shown is the runway use for the nighttime hours (10 p.m. to 7 a.m.). Percentage is a ratio whereas a percentage point is the difference between two percentages.

Highlights for **April 2011** include:

Departures

Most used departure runway: **22L – 30%**
22L departures increased by **10pp** from March 2011
9R departures decreased by **10pp** from March 2011

Arrivals

Most used arrival runway: **10 – 20%**
28 arrivals increased by **8pp** from March 2011
4R arrivals decreased by **11pp** from March 2011

pp = Percentage Points

Aircraft Noise Report

The Aircraft Noise Report summarizes noise measurements from each of the 33 noise monitors located around the Airport. The data presented summarizes the Day-Night Average Sound Levels (DNL's). DNL is a 24-hour time-averaged sound exposure level with a 10 decibel (dB) nighttime (10 p.m. to 7 a.m.) weighting to account for the lower background noise levels during the nighttime hours.

The data displays the measured aircraft DNL for each month and its comparison to the same month of the previous year, and it compares the current month to the 12-month average. The aircraft noise report identifies noise from the existing aircraft operations at O'Hare. The modeled values for each monitor are shown for 1997, 2000 and the OMP Build Out Noise Contours. The aircraft noise levels for each monitor vary from month to month. This is primarily due to runways being utilized differently under changing wind conditions which effect where the aircraft fly.

Aircraft Fleet Mix Report

The Aircraft Fleet Mix Report summarizes the number and type of aircraft operating at O'Hare International Airport during both all hours of the day and during the nighttime hours.

In 1990, Congress enacted legislation to eliminate all Stage 2 aircraft operating in the continental United States by the year 2000. In response, the FAA created a program to "phase-out" the older, louder Stage 2 aircraft over a ten-year period to achieve full compliance by the 2000 deadline. As of January 2000, all aircraft operating at O'Hare and within the United States were Stage 3. Stage 3 aircraft, such as the Boeing 757 (B757) and new Boeing 737's (B737) use a quieter type of engine that significantly reduces noise at the source. Also, a Stage 3 aircraft can be a previous Stage 2 aircraft with the engines retrofitted with a "Hush-kit" such as a Boeing 727 (B72Q), Boeing 737-200 (B73Q) and DC-9 (DC9Q). More than **99%** of the operations at O'Hare International Airport are originally certified as Stage 3 aircraft.

Noise Complaint Report

The Chicago Department of Aviation (CDA) maintains a toll-free noise hotline (**1-800-435-9569**) and an on-line service at www.flychicago.com for citizens to express their concern about particular aircraft events or aircraft noise levels in general. The Noise Complaint Report summarizes the number of complaints received and where the complainants were located. The tabular report lists the number of complaints by community as well as the number of individual complainants. The graph at the bottom of the page illustrates the nature of complaints during the specified month.

Also shown are complaints by month displaying seasonal trends. The chart at the bottom of this page illustrates the trend in monthly complaints. These totals only include complaints made within the State of Illinois to the O'Hare Noise Hotline toll-free number or on-line feature.

Complaints by Month					
Month	2007	2008	2009	2010	2011
January	66	31	860	907	1,349
February	23	20	1,186	968	1,060
March	105	60	1,069	1,222	1,209
April	69	63	985	1,478	1,099
May	132	92	1,235	1,168	
June	166	140	1,131	1,587	
July	185	138	1,466	1,077	
August	145	210	1,649	1,358	
September	149	151	1,883	1,290	
October	133	123	1,514	1,207	
November	50	271	825	1,234	
December	25	1,184	1,055	850	
Total Calls	1,248	2,483	14,858	14,346	4,717

Runway Use Report

Chicago O'Hare International Airport

Period: April 2011

Time of Day: All hours



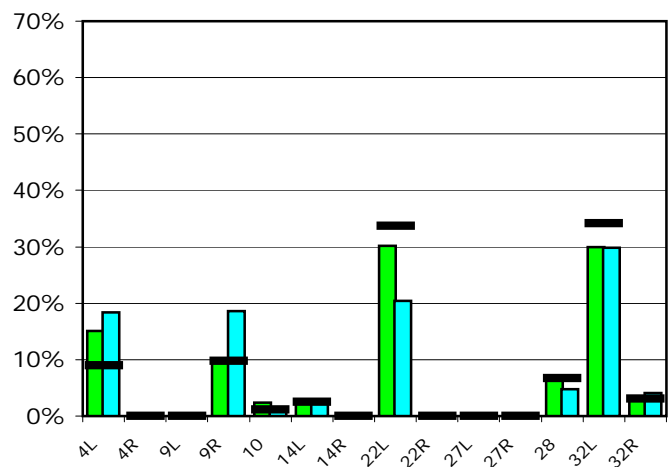
Runway Use (All hours)

Source: Airport Noise Management System (ANMS)

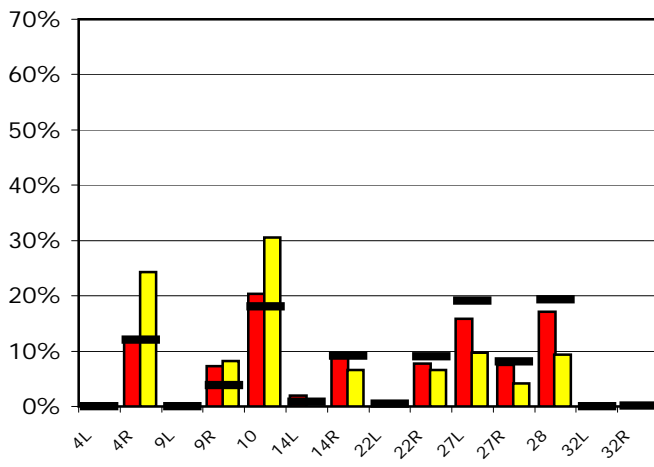
Runway Utilization

	4L	4R	9L	9R	10	14L	14R	22L	22R	27L	27R	28	32L	32R
Average Daily Departures														
April 2011	186	0	0	116	29	36	1	372	0	0	0	82	370	41
March 2011	224	0	0	227	17	27	0	249	0	0	0	59	363	49
12 Month Avg.	104	0	0	113	14	29	1	393	0	1	0	79	398	35
Average Daily Arrivals														
April 2011	0	152	0	89	248	24	109	6	94	192	91	209	0	0
March 2011	0	291	0	98	364	1	79	5	79	116	50	111	0	1
12 Month Avg.	0	142	0	45	212	10	108	6	106	225	95	228	0	2

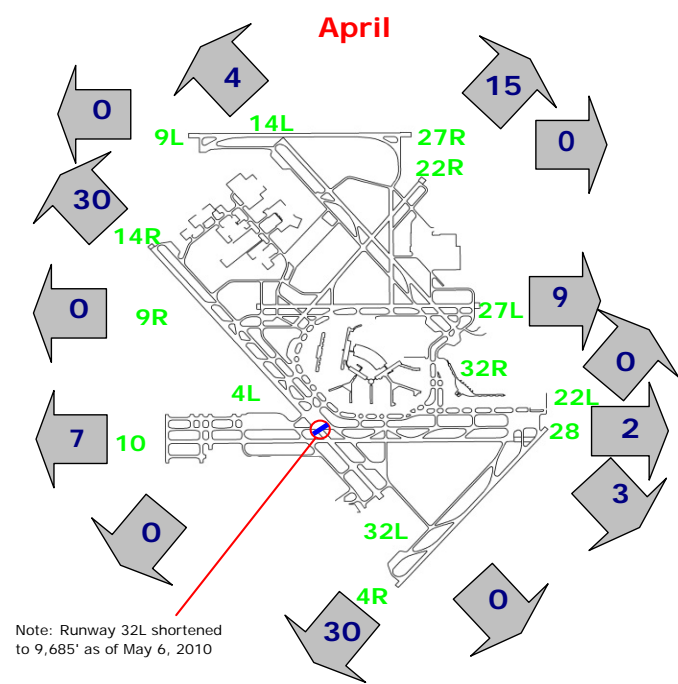
Departures (All hours)



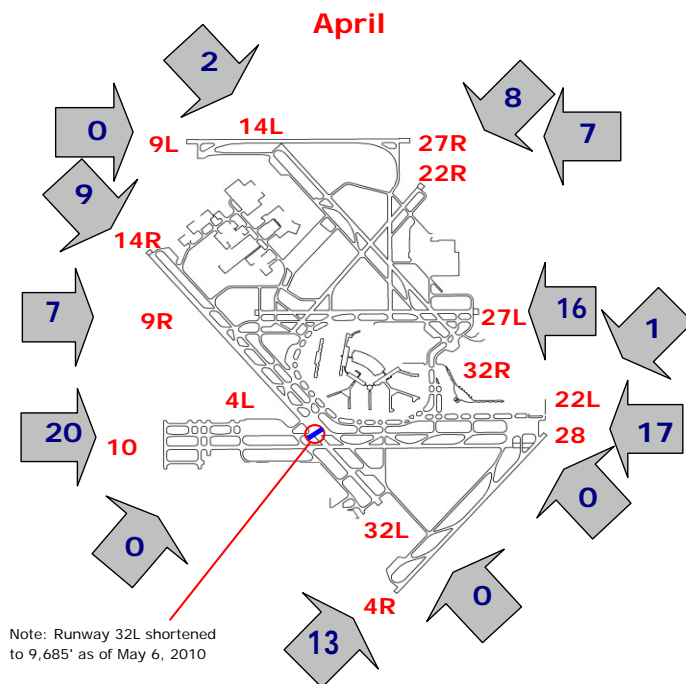
Arrivals (All hours)



Percentage Departure Utilization



Percentage Arrival Utilization



Runway Use Report

Chicago O'Hare International Airport

Period: April 2011

Time of Day: 10:00 p.m. to 7:00 a.m.



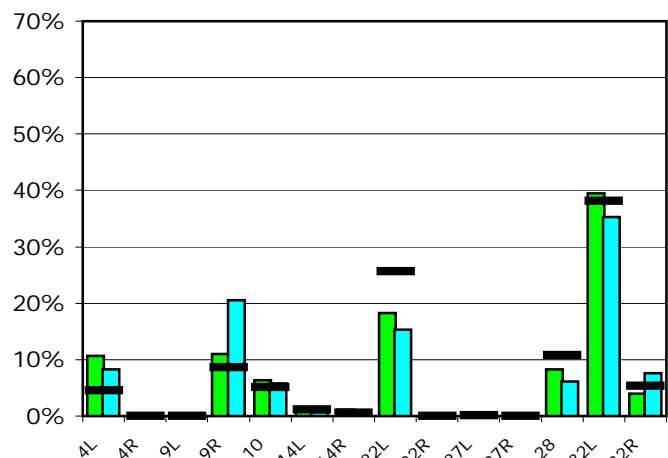
Runway Use (10 p.m. to 7 a.m.)

Source: Airport Noise Management System (ANMS)

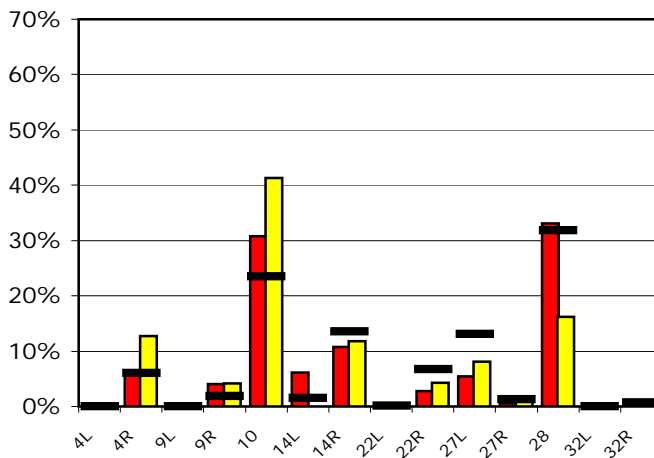
Runway Utilization

	4L	4R	9L	9R	10	14L	14R	22L	22R	27L	27R	28	32L	32R
Average Daily Departures														
April 2011	13	0	0	13	8	1	1	22	0	0	0	10	47	5
March 2011	9	0	0	22	6	1	0	16	0	0	0	6	37	8
12 Month Avg.	4	0	0	8	5	1	1	25	0	0	0	11	37	5
Average Daily Arrivals														
April 2011	0	9	0	6	43	9	15	0	4	8	1	46	0	0
March 2011	0	17	0	5	54	0	15	0	6	11	1	21	0	1
12 Month Avg.	0	7	0	2	28	2	16	0	8	16	2	39	0	1

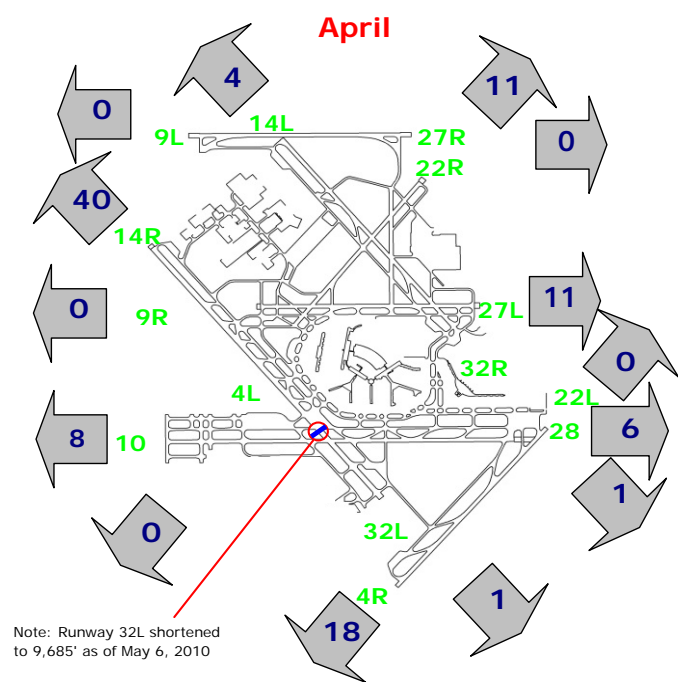
Departures (10 p.m. to 7 a.m.)



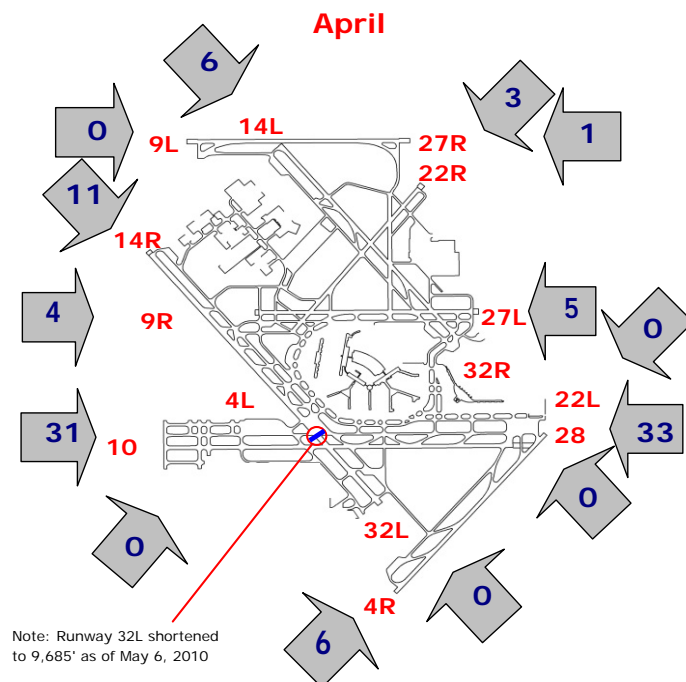
Arrivals (10 p.m. to 7 a.m.)



Percentage Departure Utilization



Percentage Arrival Utilization



Aircraft Noise Report

Chicago O'Hare International Airport

Period: April 2011

Metric: Aircraft DNL



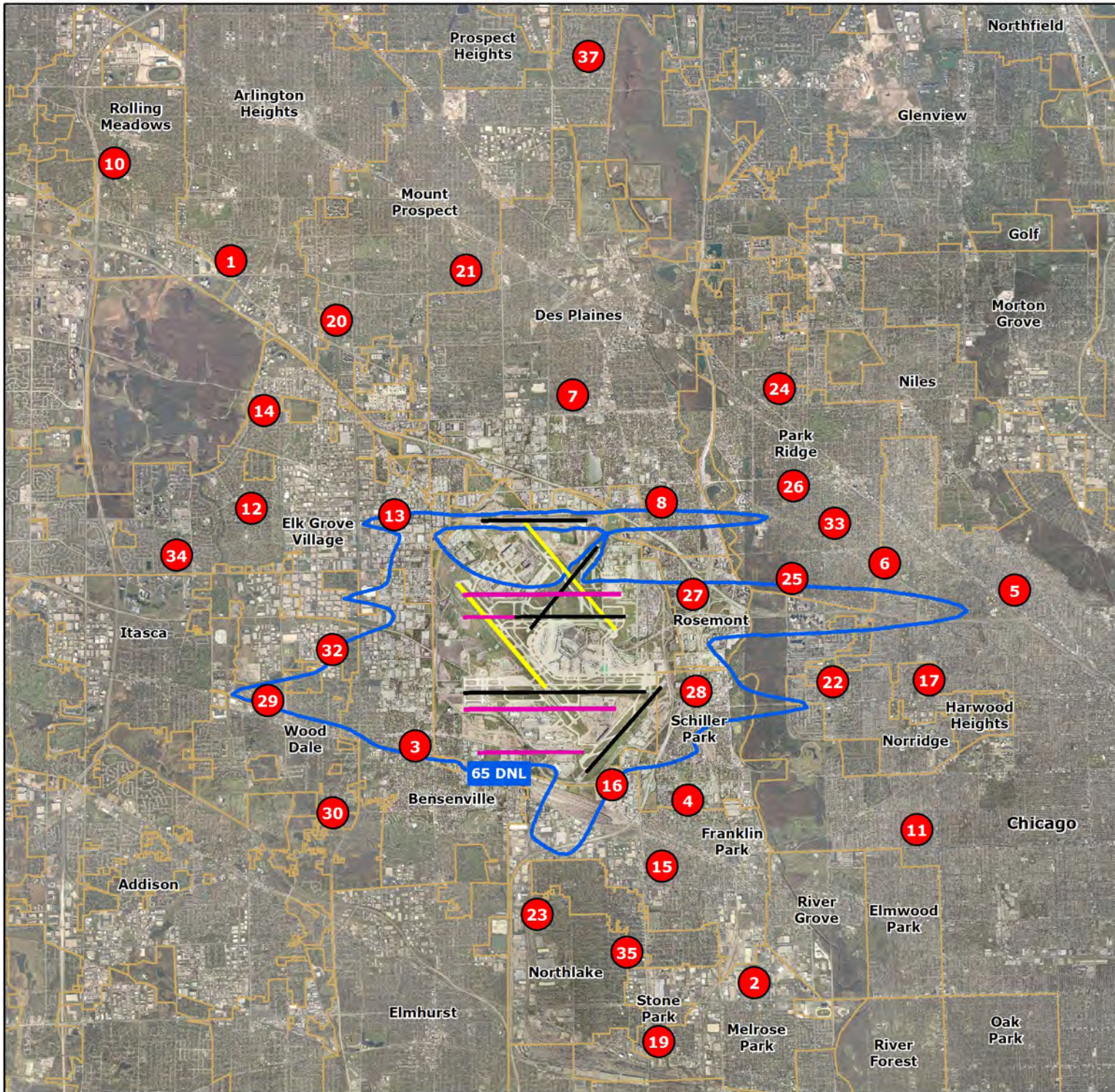
RMT #	Community	Last 12 Months Monitored Noise Levels											Last Apr 10	12 Month Average vs 1997 ²	Modeled 1997 Values	Modeled 2000 Values	Modeled OMP Build Out Values	
		May 10	Jun 10	Jul 10	Aug 10	Sep 10	Oct 10	Nov 10	Dec 10	Jan 11	Feb 11	Mar 11						Apr ¹ 11
1	Arlington Heights	58.0	59.0	59.4	60.8	58.5	57.3	57.0	56.4	56.1	56.4	58.3	59.7	59.3	58.3	63.0	63.0	50.5
2	Melrose Park	53.6	54.4	54.8	55.8	53.5	54.5	55.3	52.6	51.9	53.2	53.7	54.4	56.0	54.1	63.4	61.0	50.3
3	Bensenville	59.4	60.0	59.8	59.8	59.9	61.8	61.5	60.8	59.1	59.7	59.6	60.1	57.3	60.6	71.3	67.3	64.9
4	Schiller Park	54.8	56.8	55.9	57.5	56.2	54.5	55.1	54.4	51.8	53.7	52.8	52.8	55.6	55.0	62.6	62.6	58.8
5	Chicago	59.1	60.8	60.1	59.1	59.7	58.9	58.6	57.6	58.8	57.3	58.2	58.1	58.2	59.0	60.8	59.8	61.9
6	Chicago	60.0	59.9	62.5	59.4	58.5	58.7	58.3	56.3	55.9	58.0	59.5	60.1	56.7	59.3	61.3	59.6	57.8
7	Des Plaines	54.5	53.1	56.0	57.2	53.7	53.4	51.5	53.2	52.2	52.8	53.0	55.4	52.7	54.1	65.4	62.0	48.5
8	Des Plaines	63.4	61.5	61.0	61.2	61.2	62.3	59.9	59.4	56.9	62.5	64.6	64.0	63.4	61.9	70.0	68.8	60.8
10	Rolling Meadows	56.4	57.4	59.3	--	57.5	55.4	57.4	56.3	54.3	55.1	58.2	58.0	58.6	57.1	59.0	60.8	48.9
11	Chicago	56.7	56.4	56.6	56.5	56.4	55.9	55.5	53.3	51.0	55.0	57.7	57.7	57.3	56.0	60.9	60.7	50.3
12	Elk Grove Village	58.0	59.5	61.9	58.5	68.1	57.3	56.2	56.3	57.3	54.7	54.8	57.7	56.9	60.5	66.7	62.1	57.6
13	Elk Grove Village	72.6	74.3	78.9	74.5	73.4	70.8	71.1	71.4	70.6	71.1	72.0	72.8	63.7	73.5	80.0	77.6	64.6
14	Elk Grove Village	58.4	58.6	60.3	61.5	59.3	58.3	57.7	58.7	58.1	56.6	59.2	60.1	60.7	59.1	67.6	65.7	54.5
15	Franklin Park	53.4	55.1	56.0	57.4	56.1	55.3	57.2	54.9	53.7	57.2	55.4	56.5	58.5	55.9	64.1	62.6	53.6
16	Franklin Park	65.3	65.3	64.4	66.7	65.7	66.2	65.8	64.1	62.8	63.3	63.5	63.9	65.6	64.9	72.2	72.1	63.4
17	Harwood Heights	67.2	66.4	74.9	65.8	66.0	66.3	65.5	65.7	66.0	63.1	62.3	65.6	62.7	67.7	66.4	65.4	57.9
19	Stone Park	53.0	55.9	52.8	54.8	53.4	54.0	54.5	54.7	52.5	52.6	51.6	54.3	53.0	53.8	64.7	61.7	51.6
20	Mount Prospect	58.6	60.9	59.2	58.9	59.6	58.1	59.7	58.1	57.3	57.2	59.2	61.4	59.5	59.2	63.5	62.4	49.1
21	Mount Prospect	55.3	55.3	55.4	55.0	54.6	54.1	52.8	51.4	52.0	52.0	54.6	55.3	54.8	54.2	59.6	58.6	53.6
22	Norridge	63.4	68.0	67.2	67.2	67.7	68.3	67.2	67.0	67.4	66.7	66.5	68.5	59.3	67.2	69.2	67.7	59.2
23	Northlake	63.8	64.7	64.9	64.7	63.7	64.7	65.1	64.2	64.4	62.9	62.7	64.5	64.0	64.3	73.5	69.1	59.6
24	Park Ridge	55.5	54.3	58.4	58.1	52.9	53.8	53.2	50.1	48.5	53.0	54.7	56.1	55.5	54.9	60.3	58.8	50.6
25	Park Ridge	58.5	57.9	57.5	59.8	57.2	58.7	57.2	54.4	53.8	55.9	58.1	57.5	57.5	57.5	69.1	61.8	66.7
26	Park Ridge	59.6	57.9	58.7	60.0	57.4	58.4	56.3	53.7	53.4	57.8	60.0	59.6	59.4	58.2	64.0	61.2	59.5
27	Rosemont	65.0	64.3	63.5	64.9	64.0	64.0	64.3	61.7	61.4	63.1	65.6	64.9	65.7	64.1	73.0	67.6	70.2
28	Schiller Park	76.9	77.7	76.7	77.1	77.4	78.2	77.2	77.7	78.0	76.6	75.6	78.0	73.3	77.3	79.6	78.7	67.9
29	Wood Dale	68.4	68.0	66.6	65.5	66.7	66.3	65.2	63.3	62.5	65.4	68.5	68.4	65.3	66.6	n/a	n/a	65.1
30	Wood Dale	52.1	54.1	54.9	53.8	53.0	54.5	54.9	54.7	53.1	53.8	52.3	54.0	53.1	53.9	n/a	n/a	58.5
32	Wood Dale	60.5	62.4	61.7	61.9	62.7	64.3	63.2	63.4	62.4	61.6	60.4	64.4	59.1	62.6	71.2	66.4	63.8
33	Park Ridge	57.0	56.5	55.6	55.9	55.2	54.6	53.6	52.6	52.8	53.4	53.5	55.1	57.8	54.9	n/a	n/a	61.9
34	Elk Grove Village	56.6	56.9	57.2	54.6	54.2	55.7	53.5	55.1	55.6	53.0	54.5	56.2	55.4	55.5	66.3	61.2	61.4
35	Unincorporated Cook	54.4	54.3	55.2	57.0	54.0	54.8	56.9	54.6	53.5	52.4	53.2	54.7	53.4	54.8	70.8	65.4	54.7
37	Mount Prospect	54.1	53.6	54.2	53.8	53.7	55.5	54.3	51.4	51.2	51.5	53.9	53.8	53.6	53.6	55.1	57.0	50.5

--No data due to monitor malfunction.

n/a- Not Applicable

1. Red represents an increase of 1 dB or more from the same month of the previous year (12 monitors). Green represents a decrease of 1dB or more from the same month of the previous year (5 monitors).







2. Red represents an increase of 1 dB or more from the modeled 1997 noise contour level (1 monitor). Green represents a decrease of 1dB or more from the modeled 1997 noise contour level (29 monitors).

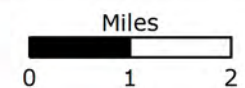


Permanent Noise Monitor Locations

City of Chicago
Richard M. Daley
Mayor
Department of Aviation
Rosemarie S. Andolino
Commissioner

Legend

-  Permanent Noise Monitors (33)
-  Existing Runways
-  Existing Runways to be Decommissioned
-  Future Runways
-  O'Hare Modernization Program Build-Out Noise Contour (65 DNL)
-  Community Boundaries


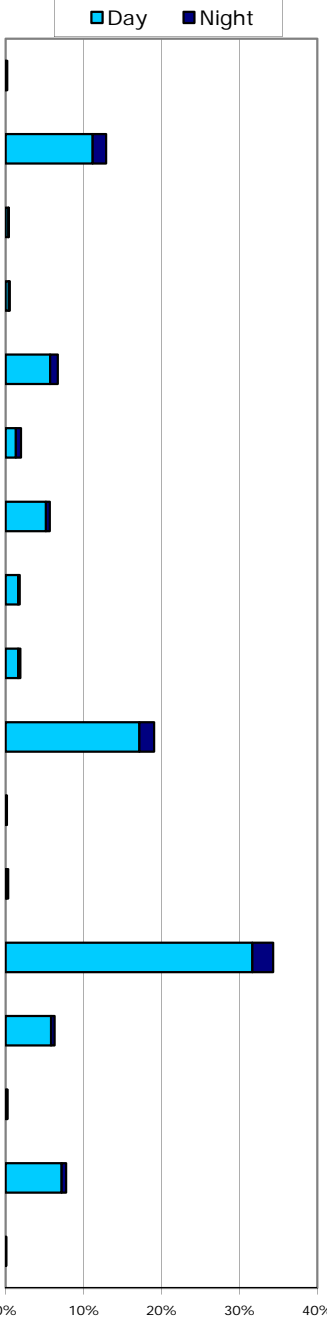

















Aircraft Fleet Mix Report

Chicago O'Hare International Airport

Period: April 2011



Jet Aircraft	Average Operations Per Day (All Hours)	Average Operations Per Night (10 p.m. - 7 a.m.)	Percent of Total (All Hours)	Percent of Total (10 p.m. - 7 a.m.)	Percentage of Total
 A300	4	4	0.2%	1.5%	
 A320	310	41	12.9%	16.3%	
 A330	9	0	0.4%	0.1%	
 A340	12	2	0.5%	0.9%	
 B737	160	24	6.7%	9.3%	
 B747	47	16	2.0%	6.4%	
 B757	136	12	5.7%	4.8%	
 B767	43	5	1.8%	1.8%	
 B777	45	8	1.9%	3.0%	
 CARJ	457	45	19.0%	17.6%	
 DC9Q	2	0	0.1%	0.0%	
 DC10	8	6	0.3%	2.2%	
 E145	825	64	34.4%	25.2%	
 E170	151	12	6.3%	4.6%	
 MD11	6	3	0.2%	1.1%	
 MD80	186	13	7.7%	5.2%	
Other Aircraft	1	0	0.0%	0.1%	
Total	2,401	255	100%	10.6%	

Noise Complaint Report

Chicago O'Hare International Airport

Period: April 2011

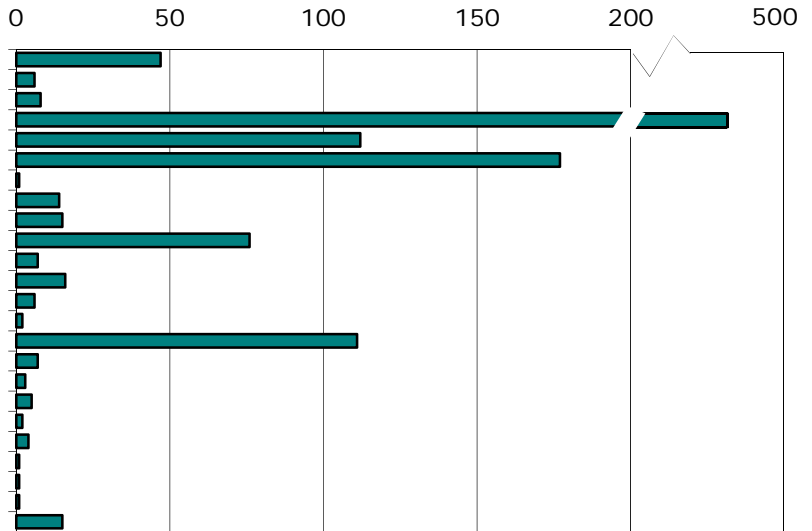


Monthly Complaints by Community¹

All Hours

Community	Total Complaints	Number of Complainants
Arlington Heights	47	3
Bensenville	6	6
Bloomington	8	3
Chicago	462	29
Des Plaines	112	9
Elmhurst	177	175
Glencoe	1	1
Harwood Heights	14	1
Hillside	15	4
Itasca	76	7
Melrose Park	7	2
Mount Prospect	16	1
Norridge	6	3
Palatine	2	1
Park Ridge	111	44
Prospect Heights	7	2
Rolling Meadows	3	2
Roselle	5	3
Rosemont	2	2
Schiller Park	4	3
Villa Park	1	1
Wheaton	1	1
Winnetka	1	1
Wood Dale	15	12
April 2011 Total	1,099	316
March 2011 Total	1,209	241

Total Complaints

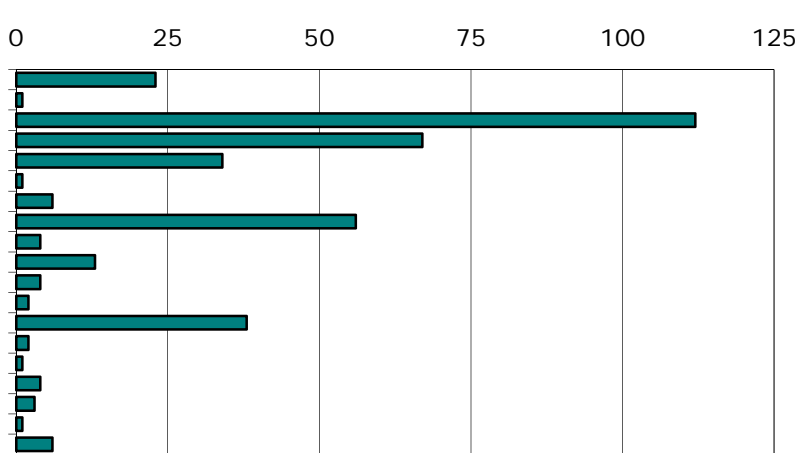


Monthly Complaints by Community¹

Nighttime - 10:00 p.m. - 7:00 a.m.

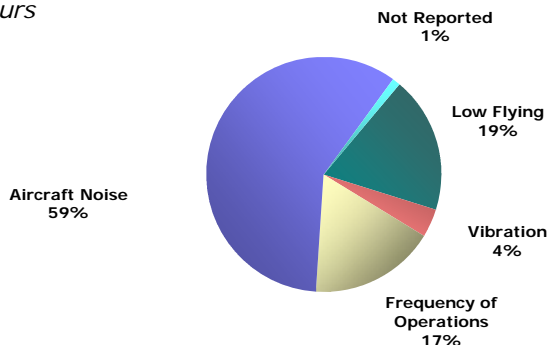
Community	Total Complaints	Number of Complainants
Arlington Heights	23	3
Bensenville	1	1
Chicago	112	16
Des Plaines	67	8
Elmhurst	34	34
Harwood Heights	1	1
Hillside	6	2
Itasca	56	7
Melrose Park	4	2
Mount Prospect	13	1
Norridge	4	2
Palatine	2	1
Park Ridge	38	14
Prospect Heights	2	2
Rolling Meadows	1	1
Roselle	4	3
Schiller Park	3	2
Wheaton	1	1
Wood Dale	6	6
April 2011 Total	378	107
March 2011 Total	396	120

Total Complaints



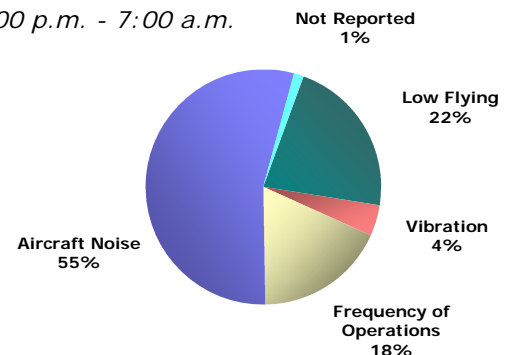
Nature of Noise Complaints

All Hours



Nature of Noise Complaints

Nighttime - 10:00 p.m. - 7:00 a.m.



¹ Complaints made within the State of Illinois.



Chicago Department of Aviation
O'Hare Noise Hotline: 1-800-435-9569
www.flychicago.com