

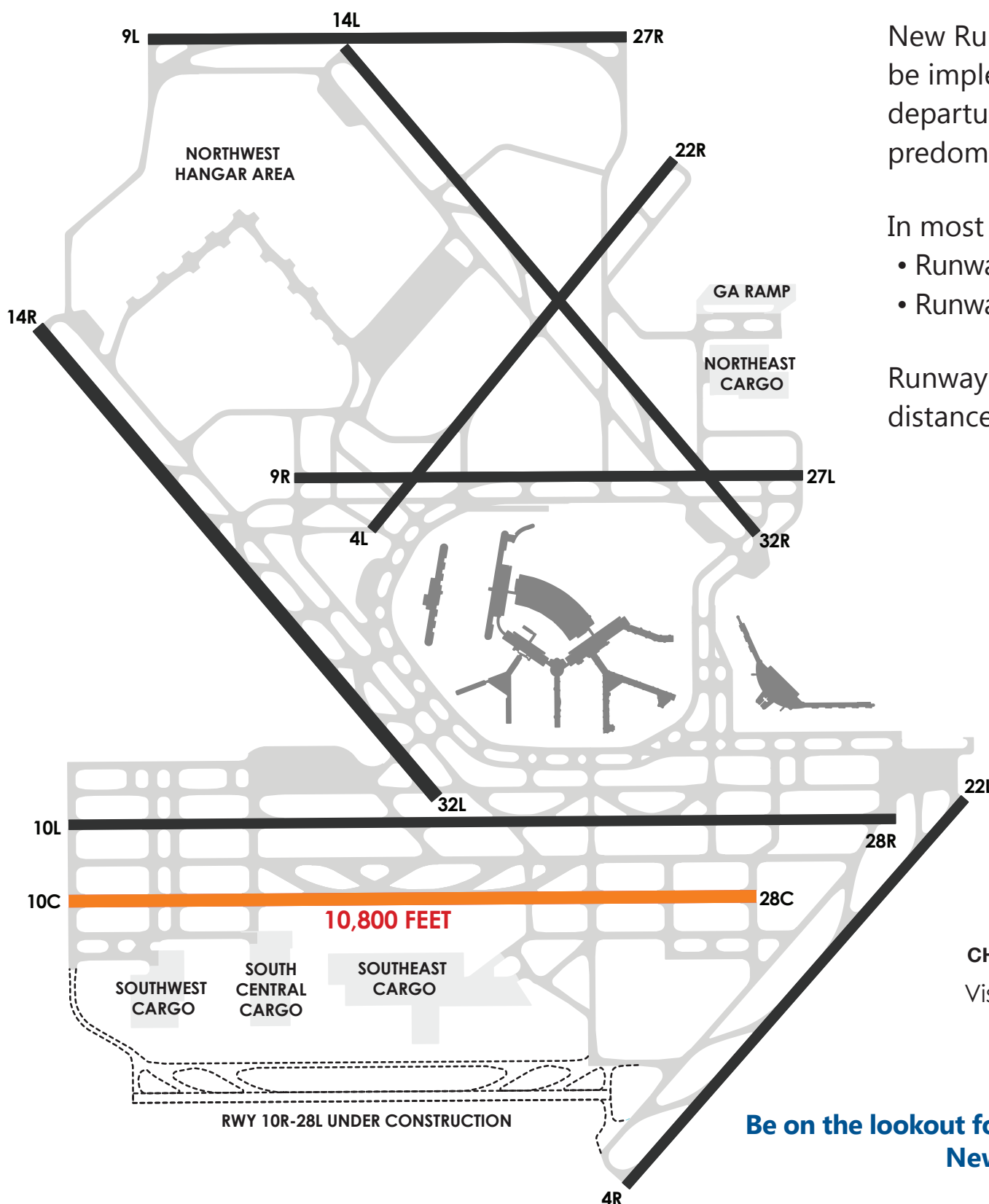
O'HARE MODERNIZATION CONTINUES

Flying East & West – O'Hare Becomes the Best

OCTOBER 17, 2013



On **October 17, 2013**, the O'Hare Modernization Program will reach another milestone with the opening of the new south airfield **Runway 10C-28C**.



New Runway configurations will also be implemented. Aircraft arrivals and departures at O'Hare will change to predominant east or west flows.

In most weather and wind conditions:

- Runway 10C-28C will be used for arrivals
- Runway 10L-28R for departures

Runway 10C will have a declared landing distance available of 10,540 feet.



CHICAGO O'HARE INTERNATIONAL AIRPORT

Visit [About Us/Pilot Awareness](#) section at www.flychicago.com

**Be on the lookout for more information coming soon:
New O'Hare Runway Configurations
New O'Hare Taxi Operations**